



Australian Alpaca Association Ltd.

Showing and Judging Manual

Effective: 08 September 2025

© Australian Alpaca Association Limited 2025

The Australian Alpaca Association was incorporated as a not-for-profit association in 1990 when participants in the fledgling industry recognised the need for a national body of like-minded people to promote and grow the concept of alpaca as a viable and sustainable primary industry. The AAA is now a company limited by guarantee and has grown to represent and provide a voice to over 1,000 alpaca owners nationally.

The AAA runs one of the most internationally advanced alpaca registers of bloodlines and breeding predictors to generate continual improvement in our herd quality and worldwide reputation. The development of standards for the emerging meat and hide industry is now underway.

AAA is recognised by the Australian Government as the peak industry body for the alpaca industry in Australia and provides tools, information and support to bring owners together for the future of alpaca farming.

The association has eight regional committees that support the needs of local members through education, training, industry liaison, marketing and shows to promote the industry.

The Showing and Judging Committee has been established to assist the AAA Board and the National Office in promoting and facilitating showing and judging of alpacas and alpaca fleece, in the training of Judges and supporting the training of convenors, stewards and exhibitors.

Australian Alpaca Association Ltd
PO Box 594
GUNGHALIN ACT 2912

+61 (0)2 6151 2073

www.alpaca.asn.au
info@alpaca.asn.au

CONTENTS

1. INTRODUCTION	7
1.1. VERSION CONTROL	7
1.2. UPDATES	7
2. SHOWING RULES	8
2.1. SHOW CONVENORS	8
Rule 1: Conduct of a Show	8
Rule 2: Minimum Numbers to Conduct a Show	8
Rule 3: Show Schedule Distribution	8
Rule 4: Halter and Fleece Sections	9
Rule 5: Management of the Show Timetable by Convenor	9
Rule 6: Show Catalogue	10
Rule 7: Show Catalogue Distribution	10
Rule 8: Judge Appointment	10
Rule 9: Number of Required Judges	10
Rule 10: Judge's Chaperone	10
Rule 11: Animal Welfare	10
2.2. JUDGES	11
Rule 12: Invitations Judge	11
Rule 13: Houseguest of an Exhibitor	11
Rule 14: Judge, Apprentice Judge and Immediate Family/Partner as Exhibitors	11
Rule 15: Conduct Before Judging Commences	12
Rule 16: Judge Will Not Refer to a Show Catalogue	12
Rule 17: Person Who May Accompany the Judge into the Ring	12
Rule 18: Handler of Alpaca Not to Address the Judge	12
Rule 19: Removal of Exhibitor or Alpaca from the Judging Ring	12
Rule 20: Unsound Alpaca	12
Rule 21: Class Not to be Re-judged	12
Rule 22: Judge's Decision is Final	13
Rule 23: Protest by the Judge	13
Rule 24: Fleece Judging	13
Rule 25: Award of Placings	13
Rule 26: Champion Awards	14
2.3. STEWARDS	14
Rule 27: Stewards may be Exhibitors	14
Rule 28: Allocation of Pens	14
Rule 29: Animal Inspections	14
Rule 30: Inspection Checklist	15
Rule 31: Isolation of Lice-Infected Alpacas	15
Rule 32: Persons to be Present During Inspections	15
Rule 33: IAR or NLIS Tag	15
Rule 34: Class Reassignment	15
Rule 35: Combining Classes	16
Rule 36: Disqualification by a Steward	16
Rule 37: Identification of Exhibits	16
Rule 38: Johne's Disease	16
Rule 39: Rule Violation and Misconduct	16
Rule 40: Protests	17
Rule 41: Fleece Sampling	17

2.4. EXHIBITORS	17
Rule 42: Eligibility of Exhibits	17
Rule 43: Ownership	18
Rule 44: Disqualified Exhibit	18
Rule 45: Rescinded	18
Rule 46: Present for Inspections	18
Rule 47: Access to Judging Ring	18
Rule 48: Exhibit Handlers	18
Rule 49: Exhibit Numbers	19
Rule 50: Handler Attire	19
Rule 51: Behaviour	19
Rule 52: Removal of Fleece	19
Rule 53: Companion Alpaca, Other Animals or Dogs	20
Rule 54: Advertising	20
Rule 55: Order of Judging	20
Rule 56: Fleece Length and Age	20
Rule 57: Animals Permitted in the Show Ring	21
Rule 58: Colour Classification	21
Rule 59: Mature Females	21
Rule 60: Recording Alpaca Movement	22
 3. CONDUCTING A SHOW	 23
3.1. CONVENING A SHOW	23
3.2. ESTABLISHING A NEW SHOW	23
3.3. SHOWS NOT ENDORSED BY THE AAA	23
3.4. INSURANCE	23
3.5. RISK ASSESSMENTS	24
3.6. CLASSES	24
3.7. MINIMUM NUMBER OF ENTRIES	24
3.8. ENTRY FORMS	24
Halter classes	24
Fleece classes	24
3.9. STEWARDS	25
3.10. SAMPLING FLEECES	25
 4. SHOW FORMAT AND CLASSES	 27
4.1. SHOW FORMATS	27
4.2. CLASS TYPES TO BE OFFERED	27
Mandatory Core Classes	27
Optional Classes	27
Trial Classes	27
4.3. SPLITTING CLASSES	27
4.4. AGE CHAMPIONSHIP SHOWS	27

4.5. COLOURED CHAMPIONSHIP SHOWS	28
4.6. PROGENY CLASSES	28
Halter Classes	28
Fleece Classes	29
4.7. MOST VALUABLE COMMERCIAL FLEECE CLASSES	29
4.8. AGE CHAMPIONSHIP HALTER SHOW CLASSES	30
Suri Classes	30
Huacaya Classes	33
4.9. AGE CHAMPIONSHIP FLEECE SHOW CLASSES	36
Suri Classes	36
Huacaya Classes	38
Additional Fleece Championships for Major Shows	41
4.10. COLOUR CHAMPIONSHIP HALTER SHOW CLASSES	41
Suri Classes	41
Huacaya Classes	44
4.11. COLOUR CHAMPIONSHIP FLEECE SHOW CLASSES	48
Suri Classes	48
Huacaya Classes	49
4.12. ALPACA YOUTH EVENTS	50
4.13. STANDARD AWARDS AND RIBBONS	50
Championship Awards	50
Non-Championship Awards	50
Ribbon numbers and Colours	50
Fleece Awards	51
5. JUDGING CRITERIA	52
5.1. HALTER CLASSES	52
Fleece Characteristics	52
Conformation Characteristics	52
5.2. PROGENY HALTER CLASSES	53
5.3. FLEECE CLASSES	53
5.4. PROGENY FLEECE CLASSES	53
5.5. MOST VALUABLE COMMERCIAL FLEECE CLASSES	53
5.6. ALPACA YOUTH EVENTS	54
6. ALPACA BREED STANDARD	55
6.1. CONFORMATION	55
Head	55
Neck	55
Forequarters	55
Body	56
Hindquarters	56
Legs	56

Udder	56
Testicles	57
Height and weight	57
Movement	57
Disqualifying faults	57
Points of the Alpaca	58
Bone Structure of the Alpaca	59
6.2. HUACAYA FLEECE	60
Characteristics	60
Colour	60
Faults	60
6.3. SURI FLEECE	61
Characteristics	61
Colour	62
Faults	62
7. GENERAL INFORMATION FOR EXHIBITORS	63
7.1. PREPARING AN ALPACA FOR SHOWING	63
Halter Training	63
Vegetable Matter	63
Brushing	63
Washing	63
Toenail Trimming	63
Keeping Animals Clean	63
Show Eligibility	63
7.2. PREPARING A FLEECE FOR SHOWING	63
Before shearing	64
Skirting	64
Packaging	64
8. GLOSSARY	65
9. APPENDIX	68
9.1. APPENDIX A RECOMMENDED PLACING RUNNING SHEETS	68
9.2. APPENDIX B MICRON/ANNUALISED WEIGHT MATRIX	71
9.3. APPENDIX C FLEECE JUDGING SCORE CARD	72

1. INTRODUCTION

The Showing and Judging Manual (Manual) is a publication of the Australian Alpaca Association Ltd (AAA) and has been prepared by the AAA Ltd. Showing and Judging Committee (SJC). The purpose of this Manual is to set down the Rules for showing and judging alpacas, alpaca fleece and other exhibits, together with providing important information and guidance for the conduct of AAA endorsed shows.

Section 2 of this Manual are deemed to be the Rules.

In these Rules, paragraph headings have no significance in interpretation of their meaning and words and expressions have the same meanings as in the Rules of the Australian Alpaca Association Ltd.

This Manual should be read in conjunction with REFERENCE A: Show and Event Biosecurity Plan.

REFERENCES

REFERENCE A: SHOW AND EVENT BIOSECURITY PLAN available at https://alpaca.asn.au/wp-content/uploads/2023/04/Show-and-Event-Biosecurity-Plan_version-6-Mar-23-1.pdf

REFERENCE B: CODE OF CONDUCT available at <https://alpaca.asn.au/wp-content/uploads/2022/05/Codes-of-Conduct-2022.pdf>

REFERENCE C: COMPLAINT HANDLING PROCEDURE available at <https://alpaca.asn.au/wp-content/uploads/2022/10/General-complaint-handling-policy.pdf>

REFERENCE D: SHOW CONVENORS AND STEWARDS MANUAL available at https://alpaca.asn.au/wp-content/uploads/2021/01/Show-Convenors-and-Stewards-Manual_Final-2020-.pdf

REFERENCE E: ALPACA YOUTH COMPETITION GUIDELINES available at <https://alpaca.asn.au/youth/>

1.1. VERSION CONTROL

This version of the Manual replaces all previous versions of the Showing Rules Manual until it is replaced by future versions as deemed by the AAA Board.

Version	Date	Owner	Action
0.1	May 2023	SJC	Major review
1.0	June 2023	AAA Board	Adopted

1.2. UPDATES

This Manual will be reviewed annually to maintain currency. Further updates will be made as the need arises.

2. SHOWING RULES

The Rules govern the responsibilities of the four key groups of persons involved in the preparation and conduct of a show: Show Convenors, Judges, Stewards and Exhibitors, and have been grouped accordingly.

Where appropriate, overlapping subject matters are cross referenced, however members should familiarise themselves with all material contained in this Manual.

2.1. SHOW CONVENORS

Rule 1: Conduct of a Show

A show shall be run in accordance with the procedures set down in the Show Schedule.

Every show must have a Property Identification Code (PIC) issued by the relevant State Government for the premises on which the show is being held. The PIC is to be shared with exhibitors.

Rule 2: Minimum Numbers to Conduct a Show

The following minimum numbers will apply to conduct a show or a show section:

Section or Class	Minimum Requirement
Halter classes in total	A minimum of 50 halter entries overall must be received, with each of the suri and huacaya halter entries meeting the minimum requirement to judge those classes.
Suri halter classes	A minimum of 10 suri halter entries must be received to judge the suri halter classes.
Huacaya halter classes	A minimum of 10 huacaya halter entries must be received to judge the huacaya halter classes.
Fleece classes in total	A minimum of 20 fleece entries overall must be received, with each of the suri and huacaya fleece entries meeting the minimum requirement to judge those classes. Fleece classes cannot be judged on the same day as halter classes by the same judge. See also Rule 9: Number of Required Judges .
Suri fleece classes	A minimum of 10 suri fleece entries must be received to judge the suri fleece classes.
Huacaya fleece classes	A minimum of 10 huacaya fleece entries must be received to judge the huacaya fleece classes.

Even if minimum numbers are met, the Convenor in consultation with their Regional Committee, retain the option to cancel a show or section if they deem the entry numbers are not sufficient to make the show or section viable.

Rule 3: Show Schedule Distribution

A Show Convenor shall supply the Show Society with a copy of the AAA Show Schedule containing the conditions of entry, classes, entry form and health declaration.

Rule 4: Halter and Fleece Sections

The Show Convenor shall ensure that all halter and fleece exhibits are eligible to compete and are exhibited in sections as determined by the AAA.

Except in the case of extraordinary show events, only one fleece may be shown from any one animal in any show and not be more than 18 months post shearing at the date of the show.

All alpacas must be registered on eAlpaca. All fleeces being exhibited, including those from wethers, must be from alpacas registered on eAlpaca and be the bona fide property of the exhibitor when shorn.

All exhibitors must be financial members of the AAA. **See also Rule 43 Ownership.**

The Show Convenor shall ensure all halter exhibit number cards are complete with the Age of Exhibit and Age Fleece detailed before issuing to exhibitors.

Rule 5: Management of the Show Timetable by Convenor

Show Convenors shall manage their show timetable according to the number of entries received for both fleece classes and halter classes. In doing so, they will have regard for:

- a) judging start and finish times.
- b) the number of alpacas and fleeces that a Judge can reasonably be expected to judge in one day.
- c) scheduled breaks for Judges and Stewards.
- d) arrival and departure times for exhibitors and inspection requirements for alpacas.
- e) date of receipt for fleeces and stewarding requirements prior to fleece judging, including set up, weighing, fleece testing.
- f) judging should not be expected to exceed eight hours in a single day, excluding breaks.

Show Convenors should allow:

- a) a minimum of two minutes per alpaca for an experienced Judge averaged over a whole day of judging halter classes.
- b) four to five minutes per fleece averaged over a whole day of judging fleece classes.

These times allow for championship awards.

Additional time should be provided for Best Colour Classes and Progeny Group awards.

It will be necessary to allow additional time for less experienced Judges, particularly Level 3 Judges, or if there are Apprentice Judge, Judge Upgrade or other dual judging requirements at the show.

In the case that entries exceed expectations, Convenors must be prepared to reschedule start and finish times, or to take other measures such as splitting sections out for judging by two judges or conducting the show over an extra day. Exhibitors shall be notified of all changes, including changes to start and finish times, extra days or changes in Judges prior to the show.

Rule 6: Show Catalogue

The Show Convenor shall ensure that a Show Catalogue is produced that records each class, and details of each alpaca and fleece entered as exhibits.

Rule 7: Show Catalogue Distribution

The Show Convenor shall have printed a number of Show Catalogues that is not less than the number of exhibitors participating in the show. The Show Catalogue shall be distributed to exhibitors on the penning day of the show. Additional copies should be made available for spectators.

Rule 8: Judge Appointment

The Show Convenor shall request a Judge from the SJC Judge Allocator three to six months before the show date. The SJC Judge Allocator shall seek expressions of interest from AAA Accredited Judges to judge at the show and will liaise with the Show Convenor to select a Judge.

The Convenor shall complete a Judge Show Agreement ("Agreement") form and forward this to the appointed Judge, who shall complete the necessary sections and return the Agreement to the Convenor. The Convenor shall provide a copy of the completed Agreement to the SJC Judge Allocator and the AAA National Office by email.

The Judge shall be provided with a copy of the Show Catalogue Summary prior to attending the show which details the numbers of exhibits in each class/section and shall not provide any indicating factors that may identify the exhibits or the exhibitors.

Rule 9: Number of Required Judges

Two Judges must be appointed if fleece and halter classes are to be judged on the same day.

Rule 10: Judge's Chaperone

The Show Convenor shall arrange for a chaperone to meet the Judge on arrival at the show so that the Judge can be escorted to the Show Office and other appropriate places for the duration of the show.

A Judge's chaperone shall not exhibit at the applicable show.

See also **Rule 15: Conduct Before Judging Commences**.

Rule 11: Animal Welfare

Nothing elsewhere in these Rules shall override the requirement that the health and welfare of an alpaca is of paramount concern and consideration of fleece length and other allowances shall be secondary in determining whether an alpaca shall be shown.

a) a declaration is to be included with show entries that states words to the effect:

"I have inspected my alpacas and have determined that they are of sound health and are fit to attend this show".

- b) if an alpaca at a show displays signs of ill health, as determined by the exhibitor or a steward, the Chief Steward must be notified immediately.
- c) if a Judge has concerns about the condition or health of an alpaca that presents in the show ring, they must advise the Chief Steward as soon as is practicable.
- d) the Chief Steward will liaise with the exhibitor in evaluating the need for veterinary assistance, which, in the event of an obviously unwell alpaca, will be called immediately. The AAA office must be notified. The Chief Steward may notify other exhibitors should there be a contagion risk.
- e) if an alpaca dies during the show, the exhibitor will be required to obtain a post mortem report detailing the cause of death. This report will be forwarded to the Chief Steward and the AAA office as soon as possible. The AAA office will determine if other exhibitors should be notified of the cause of death.
- f) Where any instance requires veterinary attendance during a show, the Chief Steward or Convenor will include details of that instance in their Post Show Report, and this will be submitted to the SJC and the AAA office.

2.2. JUDGES

Rule 12: Invitations Judge

A judge shall avoid accepting an invitation to judge alpaca classes at more than one show in an AAA Region within a six-month period, except in the case where no other Judge is available or other exceptional circumstances exist such as preparation for judging at a forthcoming National Alpaca Show.

Rule 13: Houseguest of an Exhibitor

Where a Judge agrees to judge at a show and the Judge receives an invitation to be the overnight houseguest of any alpaca owner or manager in preparation for the show or during the show, or invites an owner or manager of alpacas to be the overnight houseguest of the Judge, the Judge shall make appropriate enquiries to establish whether that alpaca owner or manager intends to exhibit or handle alpacas or alpaca fleece at that show. If the alpaca owner or manager does intend to exhibit or handle fleeces at that show, the Judge must decline the invitation of or withdraw the invitation to the alpaca owner or manager.

Where any alpaca owner or manager has been the host or houseguest of the Judge since entries for the show opened, the alpaca owner or manager must not exhibit or handle alpacas or alpaca fleece at that show. The Convenor shall arrange a refund of show entry and other fees paid by an alpaca owner or manager who becomes subject to this Rule because of a change in Judge after their entries have been submitted.

Rule 14: Judge, Apprentice Judge and Immediate Family/Partner as Exhibitors

The Judge or Apprentice Judge and their immediate family/partner (as defined in the glossary) shall not exhibit alpacas or alpaca fleece at any show at which the Judge or Apprentice Judge is judging both halter and fleece classes. See also **Rule 44 Disqualified Exhibit**.

The Judge or Apprentice Judge and their immediate family/partner (as defined in the glossary) may exhibit alpacas at a show where they are judging alpaca fleece classes only.

The Judge or Apprentice Judge and their immediate family/partner (as defined in the glossary) may exhibit alpaca fleece at a show where they are judging the halter classes only.

The Convenor shall arrange the refund of show entry and other fees paid by an exhibitor who becomes subject to this Rule because of a change in Judge after their entry has been submitted.

Rule 15: Conduct Before Judging Commences

On arrival at a show, the Judge shall meet the chaperone prior to proceeding to the Show Office. No person other than a nominated Show Official or the chaperone shall speak with the Judge, other than to exchange pleasantries, before judging commences. See also **Rule 10 Judge's Chaperone**.

Judges are permitted to attend functions held over the duration of multiple day events, however they will not engage in discussions regarding the current show or exhibits and will be mindful of not allowing their time to be dominated by any particular breeder.

Rule 16: Judge Will Not Refer to a Show Catalogue

Show Officials shall ensure that the Judge has no opportunity to see the Show Catalogue before or at the show. The Judge shall refuse to examine the Show Catalogue that may be brought to the Judge's attention by any means until judging is completed.

Rule 17: Person Who May Accompany the Judge into the Ring

No person shall accompany the Judge into the judging ring except persons appointed for that purpose by Show Officials or the AAA.

Rule 18: Handler of Alpaca Not to Address the Judge

The Judge may direct the immediate disqualification and removal from the judging ring of any alpaca whose handler addresses or attempts to address the Judge whilst the class is being judged, except in response to a request from the Judge.

Rule 19: Removal of Exhibitor or Alpaca from the Judging Ring

The Judge has the right to direct the Chief Steward to remove an exhibitor or alpaca from the competition on the grounds of poor conduct.

Rule 20: Unsound Alpaca

The Judge has the right to direct the Chief Steward to remove an alpaca from the judging ring on the grounds of visible physical disfigurement, unsoundness or being unfit to compete.

Rule 21: Class Not to be Re-judged

A class that has been judged shall not be re-judged. An alpaca that has been judged in the incorrect class

due to exhibitor or stewarding error is disqualified from being judged in a following class.

The Judge may exercise their discretion to direct an alpaca to a correct class on the discovery of an error in classification during judging if:

- a) placings have not been awarded.
- b) the correct class has not yet been judged.

It is the exhibitor's responsibility to ensure their exhibits are exhibited in the correct class for age, sex and colour. Any doubt surrounding eligibility or otherwise of an exhibit to participate in a class must be clarified before judging, and in the case of halter classes before the alpaca enters the ring.

An alpaca will be disqualified if it is exhibited in the wrong class and incorrectly placed. The placing will be nullified. If the class has exited the ring, the other placings in the class will not be changed because of this error, otherwise the Judge may use discretion to adjust their placings accordingly.

Rule 22: Judge's Decision is Final

The decision of the Judge is final, and no protest shall be made in relation to the decision except on the grounds that a Judge has committed a breach of these Rules. The protest shall follow the procedures set out in **Rule 40: Protests**.

Rule 23: Protest by the Judge

The Judge may protest against an exhibitor in the case of:

- a) an alleged infringement of the Rules of a show not conducted by the AAA, by lodging a protest in accordance with the requirements of the Show Society.
- b) an alleged infringement of these Rules at a show conducted by the AAA, by lodging a written protest in accordance with the procedures set out in **Rule 40: Protests**.

Rule 24: Fleece Judging

The Micron/Annualised Weight Matrix as detailed in **APPENDIX B** and the AAA Fleece Judging Score Cards as detailed in **APPENDIX C** shall be used by all Judges. No weightings other than those detailed on the AAA Fleece Judging Score Cards will be applied.

The Supreme Fleece title, or its alternative, for the suri classes will automatically be awarded to the suri fleece that attains the highest score.

The Supreme Fleece title, or its alternative, for the huacaya classes will automatically be awarded to the huacaya fleece that attains the highest score.

The Best Overall Fleece in Show award, if awarded or awarded under a dedicated or alternate name, will automatically be awarded to the fleece, suri or huacaya, that attains the highest score overall.

Rule 25: Award of Placings

The Judge may use their discretion regarding the placings awarded in all halter and fleece classes. Placings

are detailed in **Paragraph 4.13 Standard Awards and Ribbons** of this Manual. Equal placings shall not be given in either halter or fleece classes.

Rule 26: Champion Awards

A Champion award may be assigned to the leading exhibit from the first placed alpacas in each halter section according to the Show Catalogue. Following the Champion award, a Reserve Champion award may be assigned to the next exhibit from the remaining first place alpacas plus the alpaca placing second behind the alpaca assigned the Champion award.

A Champion award may be assigned to the fleece that attains the highest point score in each fleece section according to the Show Catalogue. A Reserve Champion award may be assigned to the second highest point score in each fleece section according to the Show Catalogue.

These awards are assigned at the Judge's discretion.

2.3. STEWARDS

Rule 27: Stewards may be Exhibitors

All Stewards, including Chief Steward, Ring Stewards, Marshalling Stewards, Inspection Stewards and Fleece Stewards, may exhibit at shows in which they are officiating under the following conditions:

- a) Chief Steward shall not be the handler of any alpaca in the show.
- b) Ring Stewards may undertake the duties of Ring Steward whilst their exhibits are being judged.
- c) Fleece Stewards shall not act as a recorder during the classes in which their exhibits are being judged.
- d) Inspection Stewards shall not inspect their own alpacas.

Rule 28: Allocation of Pens

The Convenor shall determine the pen allotments and the Stewards will allocate pens to exhibitors as they arrive at the show in accordance with these allotments. No movements between pen allotments or altering of pens allotments by exhibitors (other than to rearrange or remove internal panels) is permitted without the permission of the Chief Steward.

The allotment of pens and movement of all alpacas shall comply with the requirements of the Alpaca CheQA, and QAlpaca programs.

Rule 29: Animal Inspections

Qualified Inspection Stewards shall perform the animal inspections at the time shown in the Show Schedule and in the approved manner. This may include use of National Livestock Identification System (NLIS) electronic readers.

The requirements of **REFERENCE A: Show and Event Biosecurity Plan** will apply.

In the event of a dispute between the Inspection Steward and the exhibitor, the decision of the Chief Steward will be final.

Rule 30: Inspection Checklist

The Inspection Steward's Checklist shall include:

- a) Correct alpaca in the allocated pen.
- b) Correct colour according to the AAA official colour chart, sex and age for the class entered. If the correct colour is in doubt, the Inspection Steward should recommend the alpaca be assigned to the class which is to be judged first as this will allow the Judge to decide which class the alpaca should be allocated to and, if appropriate, the Judge may direct the alpaca to return to the judging ring in the correct class.
- c) Correct International Alpaca Registry (IAR) or NLIS numbered tag, matching that shown on eAlpaca and Show Catalogue.
- d) Correct fleece length for both huacaya and suri as required by the show rules as set down in the Show Catalogue.

Rule 31: Isolation of Lice-Infected Alpacas

The Chief Steward shall order the immediate removal of any alpaca from the venue discovered to be infected with lice, together with all other alpacas belonging to the exhibitor. If this immediate removal is not possible, these alpacas shall be relocated to an isolation pen where they shall remain until their removal is to occur.

Rule 32: Persons to be Present During Inspections

The exhibitor or their nominated representative shall be present in the pen for the purposes of performing inspections. The Inspection Steward and recorder shall remain outside the pen for biosecurity reasons.

Rule 33: IAR or NLIS Tag

All halter exhibits shall display the correct IAR or NLIS tag in their ear.

For an exhibit to remain eligible for judging in the event the IAR or NLIS tag is missing, confirmation from the AAA that the tag has recently been lost and a new tag has been purchased must be supplied by the exhibitor to the Chief Steward before judging commences. Confirmation may be electronic or in hard copy and be available to the judge on request. The Chief Steward may disqualify an exhibit that does not meet this requirement. See also **Rule 36 Disqualification by a Steward** and **Rule 42 Eligibility of Exhibits**.

Where an exhibit displays both an IAR tag and a NLIS tag, the NLIS tag is to be used.

Rule 34: Class Reassignment

The Chief Steward shall reclassify an exhibit entered in a class for which it is ineligible immediately upon becoming aware of the irregularity.

Rule 35: Combining Classes

A minimum of three entries per class is recommended and if entry numbers are less than this, the Chief Steward, in consultation with the Judge, may combine classes. Championship awards shall not be combined.

If 20 or more entries are received in either the suri or huacaya halter or fleece classes, the full range of age or colour classes shall be run.

Rule 36: Disqualification by a Steward

The Chief Steward may disqualify a halter exhibit on the grounds of:

- a) the exhibit missing its IAR or NLIS tag, and the exhibitor has not provided the required confirmation letter from the AAA. See also **Rule 33 IAR or NLIS Tag**.
- b) its handler being incorrectly attired. See also **Rule: 50 Handler's Attire**.

The Chief Steward shall disqualify a halter exhibit on the grounds of its handler is wearing incorrect footwear. See also **Rule: 50 Handler's Attire**.

The Chief Steward may disqualify a fleece exhibit if any unapproved inclusions are contained in the fleece bag with the exhibit.

Rule 37: Identification of Exhibits

The Show Convenor may update eAlpaca as the show progresses. No other official announcements, identifying the name or ownership of exhibits, in any form (including social media) shall take place until the Supreme Champions have been awarded.

Rule 38: Johne's Disease

No exhibit shall be present at the show unless one of the following applies:

- a) the alpacas originate from a State recognised as a Johne's Disease protected area.
- b) proof of accreditation under Alpaca CheQA or QAlpaca is provided.
- c) a signed declaration verifying that the exhibits have not at any period of their lifetime been in a herd or on a property where Johne's Disease was known or suspected to exist is submitted with the application for entry.

Rule 39: Rule Violation and Misconduct

A violation of any Rule or any by an exhibitor, participant or member:

- a) other than during the show, shall be reported in writing to the Show Convenor or Regional President within one week of the incident occurring.
- b) during the show, shall be reported to the Chief Steward or Show Convenor in writing by either the Judge, a Steward or exhibitor within one hour of the alleged incident occurring.

Misconduct has occurred if the actions are prejudicial to the industry. Such actions include, but are not

limited to:

- a) demonstration of dissatisfaction with a Judge's decision, including refusal to accept an award or throwing an award on the ground.
- b) altercations with Show Officials, exhibitors or the general public.
- c) abusive, foul or obscene language.
- d) rude or obscene gestures in public.
- e) mistreatment of an animal.

Written complaints shall be investigated immediately, and if sufficient grounds for the complaint are confirmed, the matter will be referred to the AAA Board for appropriate action as detailed in **REFERENCE B: CODE OF CONDUCT**.

This Rule applies to all stages of an AAA endorsed show, including, but not limited to, planning, preparation, coordination, set-up, during the show, and post-show pulldown and clean up.

Rule 40: Protests

Violation of these Rules is the sole grounds for a protest. Protests will be managed in accordance with **REFERENCE C: COMPLAINT HANDLING PROCEDURE**

Rule 41: Fleece Sampling

Fleece exhibits at the AAA National Alpaca Show and special fleece shows shall be fleece sampled in accordance with the procedure set down in **Paragraph 3.10 Sampling Fleeces** of this Manual and tested by an approved fleece testing facility using the OFDA2000 testing instrument with the Trim High setting off. The Show Convenor may choose to implement fleece sampling for other fleece shows.

2.4. EXHIBITORS

Rule 42: Eligibility of Exhibits

An alpaca or fleece is ineligible to compete as an exhibit at any show if:

- a) the alpaca is not registered on eAlpaca.
- b) the alpaca is registered on eAlpaca but is not wearing the IAR or NLIS tag assigned to it in eAlpaca unless the Chief Steward has been provided with confirmation from the AAA by the exhibitor that the IAR or NLIS tag has recently been lost and a new IAR or NLIS tag has been purchased. See also **Rule 33 IAR or NLIS Tag**.
- c) the alpaca or fleece is of suri type entered in a class for alpacas or fleeces of huacaya type.
- d) the alpaca or fleece is of huacaya type entered in a class for alpacas or fleeces of suri type.
- e) the alpaca displays any disqualifying faults, including those obtained by misadventure after birth. Explanatory letters provided by veterinarians will not be accepted.

Rule 43: Ownership

The registered owner of an exhibit must be a financial member of the AAA. See also **Rule 4 Halter and Fleece Sections**.

A member who is not the registered owner of the exhibit as recorded on eAlpaca at the time of the show, is ineligible to exhibit that exhibit.

All fleeces being exhibited, including those from wethers, must be from alpacas registered on eAlpaca and be the bona fide property of the exhibitor when shorn. See also **Rule 4 Halter and Fleece Sections**.

Rule 44: Disqualified Exhibit

An alpaca shall be disqualified from exhibiting at a show if:

- a) it is exhibited or handled by an immediate family/partner (as defined in the glossary) of the Judge. See also **Rule 14 Judge, Apprentice Judge and Immediate Family/Partner as Exhibitors**.
- b) if it has been fully or partially owned by the Judge at any time in the three months immediately before the show.
- c) it has been under the control or management of the Judge for the purposes of agistment, boarding or training. This does not extend to an alpaca that has been under the control or management of the Judge for mobile/drive by mating purposes at any time in the three months immediately before the show.

Rule 45: Rescinded

Rule 46: Present for Inspections

An exhibitor, or their representative, shall assist in the inspection of their halter class exhibits at the designated inspection time. Failure to do so may result in disqualification.

Rule 47: Access to Judging Ring

No person shall enter the judging ring after the commencement of judging a class begins, or leave the judging ring until judging of a class is completed and placings have been awarded, except:

- a) with the consent of the Judge.
- b) at the direction of the Judge or Chief Steward.

Exhibit handlers and their exhibits who have been awarded places shall remain in the judging ring until the completion of the Judge's comments.

Rule 48: Exhibit Handlers

Exhibit handlers shall remain with their exhibits in the judging ring until judging of a class is completed,

unless the Judge authorises a change of handler or removal of the exhibit from the judging ring due to the handler's inability to control their exhibit.

A handler requiring mobility or communication aides may request the assistance of a second handler during the Judge's inspection. The Chief Steward may direct the use of an alternate handler if it is decided that the size or condition of the judging ring presents an unacceptable risk to the handler requiring mobility or communication aides. A handler requiring communications aides shall supply the required aide and this shall be accommodated by the Judge where practicable.

Rule 49: Exhibit Numbers

Exhibit numbers shall be displayed on the Animal Exhibit Number Card, displayed in armbands designed for this purpose and worn on the left arm of the handler.

Rule 50: Handler Attire

Whilst in the judging ring, exhibitors shall wear the approved attire as described below:

- a) Long black pants or long black skirt.
- b) An official AAA black shirt.
- c) AAA official black vest or coat, if required.
- d) Black or brown enclosed shoes constructed of a suitably strong material, for example leather, rubber or a synthetic of the similar strength, and does not include boat shoes, sand shoes, ugg boots or similar. Failure to wear the correct footwear presents an unacceptable health and safety risk. An exhibitor must ensure that their legs and feet are safely covered. See also **Rule 36: Disqualification by a Steward**.

Exhibitors shall not be excluded from the show ring for wearing the approved attire described above.

The Show Convenor may vary the handler attire, such as allowing historic or commemorative dress for special events, with the consent of the SJC.

No identifying information, or details that may be construed as stud/breeder advertising, shall be displayed on either the handler or the exhibit. See also **Rule 36: Disqualification by a Steward**.

Rule 51: Behaviour

All show participants, including exhibitors, handlers and others, shall behave with respect toward the Judge, Show Officials, the general public and all other persons involved with the show.

Misconduct action shall be initiated if a participant does not respond to a direction given by the Judge or the Chief Steward in relation to their behaviour in accordance with **Rule 39 Rule Violation and Misconduct**.

Rule 52: Removal of Fleece

Exhibits shall not have fleece removed to a level below that of the blanket fleece, if the purpose of removal is to disguise the existence of fleece of a different colour or other potential undesirable trait.

Rule 53: Companion Alpaca, Other Animals or Dogs

Permission must be obtained from the Show Convenor or Chief Steward to bring a companion alpaca prior to submission of entries.

No dogs or other animals are permitted in the show precinct, including judging, penning, preparation, exercising, marshalling or viewing areas.

Rule 54: Advertising

Promotional material is permitted within the bounds of the exhibitor's penning area provided this material does not infringe on other exhibitors' enjoyment or participation in the show.

Except where the following are part of an endorsed campaign conducted by the Show Convenor and endorsed by the relevant Show Committee, the following shall not be displayed:

- a) for sale sign.
- b) awards, including trophies and ribbons, attained at previous shows.

Instructions on promotional materials must be included in the Show Schedule. Any changes to the display requirements of promotional material must be advised to all exhibitors.

Rule 55: Order of Judging

The order of judging shall alternate between suri and huacaya classes when both are being exhibited is encouraged.

Rule 56: Fleece Length and Age

The following shall apply to the halter sections only:

- a) suri fleece shall have a recommended minimum fleece length of 50mm.
- b) suri in a first fleece shall have a maximum fleece age of 18 months.
- c) suri in a second or subsequent fleece shall have a maximum fleece age of 14 months.
- d) huacaya fleece shall have a maximum fleece age of 14 months.
- e) huacaya fleece shall have a recommended minimum fleece length of 50mm.

Shows held between 01 January and 31 March each year may be designated as Short Fleece Shows and:

- a) suri fleece shall have a recommended minimum fleece length of 30 mm.
- b) huacaya fleece shall have a recommended minimum fleece length of 20mm.

On a case-by-case basis the Show Convenor may apply to the SJC to designate a show that is conducted after 31 March as a Short Fleece Show. The SJC will consider the circumstances of the application and, shall approve the application if:

- a) the circumstances are deemed appropriate.

- b) the application is made and approved before the distribution of the Show Catalogue.
- c) the application applies to a single year, ie the SJC shall not provide permanent approval to redesignate a standard length show as a Short Fleece Show.

Rule 57: Animals Permitted in the Show Ring

No alpaca or other animal shall enter in the show ring unless it is being judged in the current class.

Cria of females being judged shall remain in their designated pen or supervised outside the showing.

Rule 58: Colour Classification

An exhibit shall be shown in the colour class that relates to its predominant colour. Variations in colour shall be assessed at the time of inspection (see also Rule 30).

The colour classes are as follows:

- a) White – the exhibit predominantly demonstrates a pristine bright white fleece.
- b) Light fawn – the exhibit predominantly demonstrates a cream or off-white fleece or carries light fawn on the neck or backline.
- c) Medium/Dark Fawn – the exhibit predominantly demonstrates a medium fawn or dark fawn fleece.
- d) Brown – the exhibit predominantly demonstrates a light brown, medium brown or dark brown fleece.
- e) Roan – the exhibit demonstrates a medium fawn, dark fawn, brown or black fleece with a significant amount of easily visible white fibres that are consistently distributed throughout the entire fleece upon opening for inspection. Roan includes alpacas that may or may not have other white markings on their face, legs and/or body. Roan does not include alpacas that display white fibres because of ageing or an inconsistent distribution of white fibres. Roan classes shall be separated from grey classes at all shows.
- f) Grey – the exhibit predominantly demonstrates a light grey, medium grey, dark grey or rose grey fleece. Grey includes alpacas that may or may not have other white markings on their face, legs and/or body.
- g) Black – the exhibit predominantly demonstrates bay black or true black fleece.
- h) Fancy – the exhibit demonstrates an unusual or striking distribution of two or more colours on the saddle, neck and/or legs on or above the knee. Fancy includes pintos and tuxedo fronts where the primary colour is not grey, and appaloosas which may include grey where the exhibit is registered on eAlpaca with the APP prefix and displays six or more evenly sized spots across its blanket. Fancy classes shall form part of the standard colour classes and not be treated separately.

Rule 59: Mature Females

A female alpaca must have produced a cria which has been registered on eAlpaca to be eligible for entry in a Mature Female halter class (48 months and over).

Rule 60: Recording Alpaca Movement

It is the responsibility of the exhibitor to ensure that stock movements are recorded correctly on the NLIS database, both to and from the showgrounds.

3. CONDUCTING A SHOW

3.1. CONVENING A SHOW

REFERENCE D: SHOW CONVENORS AND STEWARDS MANUAL provides detailed guidance.

Generally, to endorse a show, the Regional Committee shall be provided with:

- a) the proposed Show Schedule which details the way the show will be run.
- b) a general description of the venue.
- c) the event budget.
- d) a Show and Event Biosecurity Plan which complies with the AAA and applicable State requirements.

To approve the show in eAlpaca, the AAA shall be provided with:

- a) the Regional Committee endorsement of the show.
- b) the event budget.
- c) a Show and Event Biosecurity Plan which complies with the AAA and applicable State requirements.

Where the Regional Committee is non-functioning these approvals should be obtained from the AAA office.

Show Convenors must have attended an approved AAA Convenors and Stewards training course or able to demonstrate that they have gained experience convening a show under the guidance of an experienced convenor.

Each Region should regularly provide an updated show calendar to the SJC, together with an update to the AAA Office to allow the events calendar to be updated on the AAA website.

3.2. ESTABLISHING A NEW SHOW

Convenors of new shows who seek to engage an AAA Accredited Judge must obtain endorsement from their Regional Committee or the AAA Office and consult with the SJC..

3.3. SHOWS NOT ENDORSED BY THE AAA

Shows that are not endorsed as AAA shows are not able to:

- a) engage an AAA Accredited Judge (except by prior agreement with the AAA).
- b) utilise AAA support, resources or assets, including the AAA logo, eAlpaca (except by prior agreement with the AAA) and insurance.

3.4. INSURANCE

Prior to the Show the Show Convenor shall contact the AAA Office and obtain details of the insurance cover that applies to members, animals and the general public from the day of penning until the closure of the Show.

Incidents that could result in a claim of damage, loss or injury sustained from the day of penning to the close of the Show shall be recorded by the Show Convenor and a written report provided to the AAA Secretary within

five days of the completion of the Show.

3.5. RISK ASSESSMENTS

Show Convenors must undertake a risk assessment and have an Injury/Incident Register prepared.

3.6. CLASSES

The official Association Show Classes for halter and fleece classes can be found in **Section 4 Show Format and Classes** of this Manual. The mandatory classes must be used at all Association shows, although it is recognised that age classes may be combined where there are insufficient exhibits or split where there are a suitable number of exhibits.

The standard awards and ribbons can be found in **Paragraph 4.13 Standard Awards and Ribbons** of this Manual.

3.7. MINIMUM NUMBER OF ENTRIES

The minimum number of entries for a show is set down in **Rule 2 Minimum Numbers to Conduct a Show**.

3.8. ENTRY FORMS

The following information is required on entry forms:

Halter classes

- a) Section and class number.
- b) Sex.
- c) Colour.
- d) Registered name of the alpaca, including herd prefix.
- e) IAR or NLIS number.
- f) Date of birth of the alpaca.
- g) Last shearing date (if applicable).
- h) Registered names of the sire and dam of the alpaca, including herd prefixes.
- i) Signed declaration by the exhibitor or their authorised agent, confirming that all information is correct, including any penning details.
- j) Health declaration.

Fleece classes

- a) Section and class number.
- b) Registered name of the alpaca, including herd prefix.

- c) IAR or NLIS number.
- d) Colour.
- e) Date of last shearing.
- f) Age of animal when shorn in months.
- g) Age of fleece in months.
- h) Registered names of the sire and dam of the alpaca, including herd prefixes.
- i) Signed declaration by the exhibitor or their authorised agent, confirming that all information is correct, including any penning details.

3.9. STEWARDS

REFERENCE D: SHOW CONVENORS AND STEWARDS MANUAL provides detailed guidance. Generally, The Chief Steward is responsible for the conduct of a show the activities of all Stewards, together with liaising with Show Officials and exhibitors as required.

An efficient Ring Steward is one who assists the Judge to be effective and facilitates the process of judging to run smoothly and efficiently.

All Stewards must act impartially and use the Rules and guidance contained in this Manual to guide decisions.

Stewards, and in particular, the Chief Steward must be familiar with:

- a) showing etiquette.
- b) judging criteria and procedure.
- c) correct exhibitor behaviour and attire.
- d) the Show Rules as detailed in **Section 2** of this Manual.

The Chief Steward, Ring Steward, Marshalling Steward and Master of Ceremonies should know:

- a) where the exhibits are to be.
- b) how the Judge wants halter classes paraded and lined up in relation to the audience and/or light source.

The Chief Steward and the Ring Steward should:

- a) ensure there is appropriate spacing between exhibits as they are being paraded or positioned in the ring.
- b) facilitate the handling and movement of exhibits as required by the Judge.
- c) assist exhibitors who may be required to move forward for the purposes of judging Reserve Champions.
- d) be aware of the location of ribbons and awards, know where to place these in the judging ring and how to assist the Judge in their correct presentation.

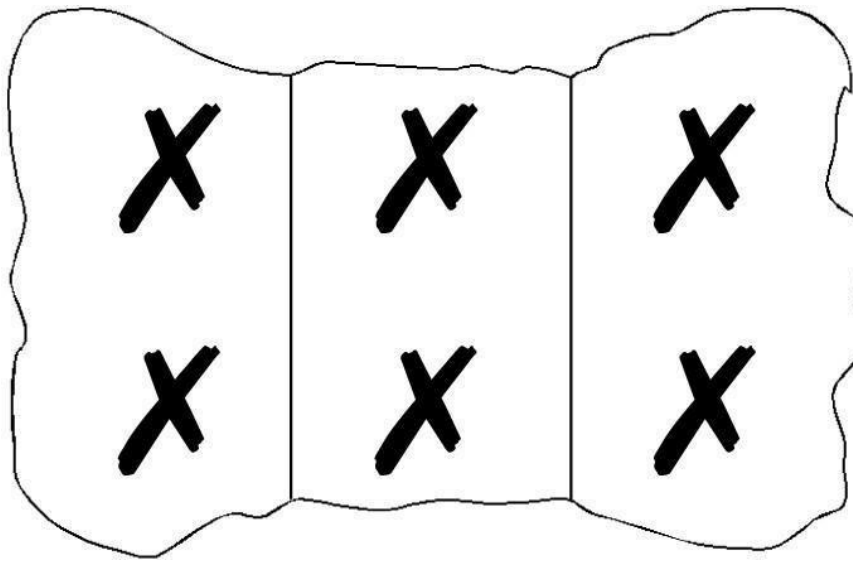
3.10. SAMPLING FLEECES

This procedure should be followed to ensure consistency and lack of bias in sampling fleeces being tested

for shows. This procedure is designed to balance effort and accuracy by replacing both random single sampling and grid sampling and is for the purposes of sampling for show fleece testing only. In accordance with **Rule 41**, the standard for testing fleece for shows using the OFDA2000 should be with the Trim High setting off to provide a true reading of the fleece and be compatible with readings from other instruments.

The fleece sampling procedure is as follows:

- a) fill in the identification tag with the Name of the show, Class and Entry Number at the time a new fleece is sampled. Do not fill in before sampling as a group, or after sampling is completed.
- b) remove the fleece from the bag and spread on a table, return sampled fleece to the original bag. For noodled fleeces remove from plastic, remove the noodled fleece in the craft paper, unroll the fleece leaving it on the craft paper, spread out as necessary on the craft paper to position for sampling. Fold and roll the noodled fleece up and return to covering plastic bag.
- c) take samples from each of the six positions marked below.



- d) place the samples into a bag and insert the identification tag completed at step one.
- e) when all fleeces have been sampled, place all identified sample bags into a larger bag and send to an accredited testing facility.
- f) The testing facility should follow the approved AAA testing protocol.

4. SHOW FORMAT AND CLASSES

4.1. SHOW FORMATS

AAA Shows are run as either Age Championship Shows or Coloured Championship Shows which are detailed below.

4.2. CLASS TYPES TO BE OFFERED

Within each show structure there are the following types of classes:

Mandatory Core Classes

These classes must be offered at all shows.

Optional Classes

These classes may be offered at the discretion of the Show Convenor and aim to provide Convenors with increased flexibility beyond the mandatory core classes to design a show that is most suited to their Region's membership.

Trial Classes

These classes may be implemented at a show with the agreement of the Show Convenor to test proposed changes to the show format before wider implementation. Where trial classes are used, the Convenors will be expected to include the outcomes of running these classes in their post-show report.

4.3. SPLITTING CLASSES

All classes with more than 20 entries must be split evenly from youngest to oldest. For example if there are 30 entries in the HAWSHF Junior White Female class, this class should be made into two classes – HAWSHF A with 15 exhibits and HAWSHF B with 15 exhibits.

4.4. AGE CHAMPIONSHIP SHOWS

An Age Championship Show is the format for most AAA Shows, in which fleece and halter competitions are conducted in age-based sections. Within each age section are classes based on sex and colour as described in **Paragraph 4.4 AGE CHAMPIONSHIP HALTER SHOWS** and **Paragraph 4.8 AGE CHAMPIONSHIP FLEECE SHOW** of this Manual.

Male and Female Championships and Reserve Champions are awarded for each section of the halter show only. The Champions of each age section may compete for:

- a) Best Male in Show or Best Female in Show, if these awards are used, and these go on to compete for the Supreme Champion Award.
- b) Supreme Champion directly if the Best Male and Best Female awards are not used.

Best in Colour awards may be held as part of the Age Champions Show format for halter exhibits and judged after the award of the Supreme Champion. The exhibits that attain first place awards in each colour class may

compete for:

- a) Best Male in Colour or Best Female in Colour, if these awards are used, and these go on to compete for the Best in Colour.
- b) Best in Colour directly if the Best Male and Best Female awards are not used.

The Best in Colour awards for fleece exhibits are automatically awarded to the fleece in each colour attaining the highest point score.

Show Convenors have the option to combine suri fleece classes if the entry numbers prevent offering the full range of fleece classes, noting that it is recommended there is a minimum of three fleeces in each class. In this event the combined colour classes shall be:

- a) white.
- b) fawn.
- c) all other colours.

4.5. COLOURED CHAMPIONSHIP SHOWS

A Coloured Championship Show, sometimes referred to as a “Colourbration” show, is a show in which fleece and halter competitions are conducted in colour-based sections. In each colour section are classes based on sex and age as described in **Paragraph 4.5 COLOUR CHAMPIONSHIP HALTER SHOWS** and **Paragraph 4.9 COLOUR CHAMPIONSHIP FLEECE SHOWS** of this Manual. Male and Female Championships are awarded for each section of the halter show only, and these then compete for the Supreme Champion Award.

4.6. PROGENY CLASSES

Halter Classes

Exhibits in sire’s progeny and dam’s progeny halter classes:

- a) shall consist of two progeny, with the exception of sire’s progeny at major shows which shall consist of three progeny.
- b) may be a group of males and/or females but must not be wethers.
- c) need not be owned or bred by one exhibitor.
- d) must be entered as exhibits in the show and, therefore, drawn from the ordinary halter classes of the show.

Sire’s progeny groups shall consist of progeny from a single sire out of different dams. Dam’s progeny groups shall consist of progeny from different sires out of the same dam and must have a minimum of 11 months age difference between the progeny presented for this class.

Exhibits are to be entered at the show by a time nominated by the Chief Steward. In addition to displaying the progeny group entry number, all members of the progeny group are to display their halter class Animal Exhibit Number Card to provide age and fleece growth information.

Fleece Classes

Exhibits in sire's progeny and dam's progeny fleece classes:

- a) shall consist of two progeny.
- b) may be a group of males and/or females but must not be wethers.
- c) need not be owned or bred by one exhibitor.
- d) must be entered as exhibits in the show and, therefore, drawn from the ordinary fleece classes of the show.
- e) entry is to be made in the name of the sire or dam with the two fleeces that comprise the progeny group being nominated on the entry.
- f) colour and age of each progeny within the group will not be a discriminating factor.

Sire's progeny groups shall consist of progeny from a single sire out of different dams.

Dam's progeny groups shall consist of progeny from different sires out of the same dam and must have a minimum of 11 months age difference between the progeny presented for this class.

Exhibits are to be entered at the show by a time nominated by the Chief Steward. In addition to displaying the progeny group entry number, all members of the progeny group are to display their halter class Animal Exhibit Number Card to provide age and fleece growth information.

Progeny Fleece classes apply to Major Shows and fleece shows where:

- a) more than 100 fleece exhibits are expected to be received.
- b) entries close and fleeces are received at least three days before judging, to facilitate the additional entry checking and processing, and allow the Show Convenor to confirm the eligibility of entries.

4.7. MOST VALUABLE COMMERCIAL FLEECE CLASSES

Entries for Most Valuable Commercial Fleece Classes are separate and in addition to the entries to the ordinary fleece classes of the show. A separate and additional entry fee is payable.

It is not required that exhibits in the Most Valuable Commercial Fleece classes are also entered in the ordinary fleece classes of the show.

All exhibits will be fleece tested following the procedure set down in **Paragraph 3.10 SAMPLING FLEECES**.

Fleece values will be determined based on current market prices being paid for fleece at the time of the show. Show Convenors should obtain this information in preparation for the show, and are to refer to the Chair, SJC if this information is not readily available.

4.8. AGE CHAMPIONSHIP HALTER SHOW CLASSES

Suri Classes

SECTION HAHOSJF (mandatory)		SECTION HAOSJM (mandatory)	
Junior 6 to under 12 months Female		Junior 6 to under 12 months Male	
HADWSJF	White	HADWSJM	White
HADLSJF	Light Fawn	HADLSJM	Light Fawn
HADFSJF	Medium/Dark Fawn	HADFSJM	Medium/Dark Fawn
HADBSJF	Brown	HADBSJM	Brown
HADRSJF	Roan	HADRSJM	Roan
HADGSJF	Grey	HADGSJM	Grey
HADKSJF	Black	HADKSJM	Black
HADYSJF	Fancy	HADYSJM	Fancy
Champion Junior Female		Champion Junior Male	
Reserve Champion Junior Female		Reserve Champion Junior Male	
SECTION HOHOSIF (mandatory)		SECTION HAOSIM (mandatory)	
Intermediate 12 to under 18 months Female		Intermediate 12 to under 18 months Male	
HADWSIF	White	HADWSIF	White
HADLSIF	Light Fawn	HADLSIM	Light Fawn
HADFSIF	Medium/Dark Fawn	HADFSIM	Medium Dark Fawn
HADBSIF	Brown	HADBSIM	Brown
HADRSIF	Roan	HADRSIM	Roan
HADGSIF	Grey	HADGSIM	Grey
HADKSIF	Black	HADKSIM	Black
HADYSIF	Fancy	HADYSIM	Fancy
Champion Intermediate Female		Champion Intermediate Male	
Reserve Champion Intermediate Female		Reserve Champion Intermediate Male	
SECTION HAHOSAF (mandatory)		SECTION HAHOSAM (mandatory)	
Adult 18 to under 30 months Female		Adult 18 to under 30 months Male	

HADWSAF	White	HADWSAM	White
HADLSAF	Light Fawn	HADLSAM	Light Fawn
HADFSAF	Medium/Dark Fawn	HADFSAM	Medium/Dark Fawn
HADBSAF	Brown	HADBSAM	Brown
HADRSAF	Roan	HADRSAM	Roan
HADGSAF	Grey	HADGSAM	Grey
HADKSAF	Black	HADKSAM	Black
HADYSAF	Fancy	HADYSAM	Fancy
Champion Adult Female		Champion Adult Male	
Reserve Champion Adult Female		Reserve Champion Adult Male	
SECTION HAHOSSF (mandatory)		SECTION HAHSOSSM (mandatory)	
Senior 30 months and over Female *		Senior 30 months and over Male *	
HADWSSF	White	HADWSSM	White
HADLSSF	Light Fawn	HADLSSM	Light Fawn
HADFSSF	Medium/Dark Fawn	HADFSSM	Medium/Dark Fawn
HADBSSF	Brown	HADBSSM	Brown
HADRSSF	Roan	HADRSSM	Roan
HADGSSF	Grey	HADGSSM	Grey
HADKSSF	Black	HADKSSM	Black
HADYSSF	Fancy	HADYSSM	Fancy
Champion Senior Female		Champion Senior Male	
Reserve Champion Senior Female		Reserve Champion Senior Male	
SECTION HAHOSMF (optional)		SECTION HAHOSMM (optional)	
Mature 48 months and over Female		Mature 48 months and over Male	
HADWSSF	White	HADWSSM	White
HADLSSF	Light Fawn	HADLSSM	Light Fawn
HADFSSF	Medium/Dark Fawn	HADFSSM	Medium/Dark Fawn
HADBSSF	Brown	HADBSSM	Brown

HADRSSF	Roan	HADRSSM	Roan
HADGSSF	Grey	HADGSSM	Grey
HADKSSF	Black	HADKSSM	Black
HADYSSF	Fancy	HADYSSM	Fancy
Champion Mature Female		Champion Mature Male	
Reserve Champion Mature Female		Reserve Champion Mature Male	
		SECTION HAHOSOW (optional)	Wether Classes **
		HADOSJW	6 to under 18 months
		HADOSSW	18 months and over
		Best Wether ***	
Best Female Suri in Show (optional)		Best Male Suri in Show (optional)	
Supreme Champion Suri			
BEST IN COLOUR SURI (optional)			
Best White Female Suri (optional)		Best White Male Suri (optional)	
Best White Suri in Show (optional)			
Best Light Fawn Female Suri (optional)		Best Light Fawn Male Suri (optional)	
Best Light Fawn Suri in Show (optional)			
Best Medium/Dark Fawn Female Suri (optional)		Best Medium/Dark Fawn Male Suri (optional)	
Best Medium/Dark Fawn Suri in Show (optional)			
Best Brown Female Suri (optional)		Best Brown Male Suri (optional)	
Best Brown Suri in Show (optional)			
Best Roan Female Suri (optional)		Best Roan Male Suri (optional)	
Best Roan Suri in Show (optional)			
Best Grey Female Suri (optional)		Best Grey Male Suri (optional)	
Best Grey Suri in Show (optional)			
Best Black Female Suri (optional)		Best Black Male Suri (optional)	
Best Fancy Suri in Show (optional)			

<i>Best Fancy Female Suri (optional)</i>		<i>Best Fancy Male Suri (optional)</i>	
<i>Best Fancy Suri in Show (optional)</i>			
PROGENY CLASSES			
SECTION HAPSOD (optional)		SECTION HAPSOS	
HAHPSOD	Dam's Progeny	HAHPSOS	Sire's Progeny

* Senior sections HAOSSE and HAOSSE, and the corresponding classes should be changed to 30 to under 48 months if the optional Mature sections HAOSMF and HAOSMM and the corresponding classes are included.

** All colours

*** Not eligible for Supreme Champion Suri

Huacaya Classes

SECTION HAHOHFJ (mandatory)		SECTION HAHOHJM (mandatory)	
Junior 6 to under 12 months Female		Junior 6 to under 12 months Male	
HADWHJF	White	HADWHJM	White
HADLHJF	Light Fawn	HADLHJM	Light Fawn
HADFHJF	Medium/Dark Fawn	HADFHJM	Medium/Dark Fawn
HADBHJF	Brown	HADBHJM	Brown
HADRHJF	Roan	HADRHJM	Roan
HADGHJF	Grey	HADGHJM	Grey
HADKHJF	Black	HADKHJM	Black
HADYHJF	Fancy	HADYHJM	Fancy
Champion Junior Female		Champion Junior Male	
Reserve Champion Junior Female		Reserve Champion Junior Male	
SECTION HAHOHIF (mandatory)		SECTION HAHOHIM (mandatory)	
Intermediate 12 to under 18 months Female		Intermediate 12 to under 18 months Male	
HADWHIF	White	HADWHIF	White
HADLHIF	Light Fawn	HADLHIM	Light Fawn
HADFHIF	Medium/Dark Fawn	HADFHIM	Medium Dark Fawn
HADBHIF	Brown	HADBHIM	Brown

HADRHIF	Roan	HADRHIM	Roan
HADGHIF	Grey	HADGHIM	Grey
HADKHIF	Black	HADKHIM	Black
HADYHIF	Fancy	HADYHIM	Fancy
Champion Intermediate Female		Champion Intermediate Male	
Reserve Champion Intermediate Female		Reserve Champion Intermediation Male	
SECTION HAHOHAF (mandatory)		SECTION HAHOHAM (mandatory)	
Adult 18 to under 30 months Female		Adult 18 to under 30 months Male	
HADWHAF	White	HADWHAM	White
HADLHAF	Light Fawn	HADLHAM	Light Fawn
HADFHAF	Medium/Dark Fawn	HADFHAM	Medium/Dark Fawn
HADBHAF	Brown	HADBHAM	Brown
HADRHAF	Roan	HADRHAM	Roan
HADGHAF	Grey	HADGHAM	Grey
HADKHSAF	Black	HADKHAM	Black
HADYHAF	Fancy	HADYHAM	Fancy
Champion Adult Female		Champion Adult Male	
Reserve Champion Adult Female		Reserve Champion Adult Male	
SECTION HAHOHSF (mandatory)		SECTION HAHSOHSM (mandatory)	
Senior 30 months and over Female *		Senior 30 months and over Male *	
HADWHSF	White	HADWHSM	White
HADLHSF	Light Fawn	HADLHSM	Light Fawn
HADFHSF	Medium/Dark Fawn	HADFHSM	Medium/Dark Fawn
HADBHSF	Brown	HADBHSM	Brown
HADRHSF	Roan	HADRHSM	Roan
HADGHSF	Grey	HADGHSM	Grey
HADKHSF	Black	HADKHSM	Black
HADYHSF	Fancy	HADYHSM	Fancy

Champion Senior Female		Champion Senior Male	
Reserve Champion Senior Female		Reserve Champion Senior Male	
SECTION HAHOSMF (optional)		SECTION HAHSOSMM (optional)	
Mature 48 months and over Female		Mature 48 months and over Male	
HADWHMF	White	HADWHMM	White
HADLHMF	Light Fawn	HADLHMM	Light Fawn
HADFHMF	Medium/Dark Fawn	HADFHMM	Medium/Dark Fawn
HADBHMF	Brown	HADBHMM	Brown
HADRHMF	Roan	HADRHMM	Roan
HADGHMF	Grey	HADGHMM	Grey
HADKHMF	Black	HADKHMM	Black
HADYHMF	Fancy	HADYHMM	Fancy
Champion Mature Female		Champion Mature Male	
Reserve Champion Mature Female		Reserve Champion Mature Male	
		SECTION HAHOHOW (optional)	Wether Classes **
		HADOHJW	6 to under 18 months
		HADOHSW	18 months and over
		Best Wether ***	
Best Huacaya Female in Show (optional)		Best Huacaya Male in Show (optional)	
Supreme Champion Huacaya			
BEST IN COLOUR HUACAYA (optional)			
Best White Female Huacaya (optional)		Best White Male Huacaya (optional)	
Best White Huacaya in Show (optional)			
Best Light Fawn Female Huacaya (optional)		Best Light Fawn Male Huacaya (optional)	
Best Light Fawn Huacaya in Show (optional)			
Best Medium/Dark Fawn Female Huacaya (optional)		Best Medium/Dark Fawn Male Huacaya (optional)	

<i>Best Medium/Dark Fawn Huacaya in Show (optional)</i>			
<i>Best Brown Female Huacaya (optional)</i>		<i>Best Brown Male Huacaya (optional)</i>	
<i>Best Brown Huacaya in Show (optional)</i>			
<i>Best Roan Female Huacaya (optional)</i>		<i>Best Roan Male Huacaya (optional)</i>	
<i>Best Roan Huacaya in Show (optional)</i>			
<i>Best Grey Female Huacaya (optional)</i>		<i>Best Grey Male Huacaya (optional)</i>	
<i>Best Grey Huacaya in Show (optional)</i>			
<i>Best Black Female Huacaya (optional)</i>		<i>Best Black Male Huacaya (optional)</i>	
<i>Best Fancy Huacaya in Show (optional)</i>			
<i>Best Fancy Female Huacaya (optional)</i>		<i>Best Fancy Male Huacaya (optional)</i>	
<i>Best Fancy Huacaya in Show (optional)</i>			
PROGENY CLASSES			
SECTION HAPHOD (optional)		SECTION HAPHOS	
HADPHOD	Dam's Progeny	HAPHOS	Sire's Progeny

* Senior sections HAOSSE and HAOSSE, and the corresponding classes should be changed to 30 to under 48 months if the optional Mature sections HAOSMF and HAOSMM and the corresponding classes are included.

** All colours

*** Not eligible for Supreme Champion Huacaya

4.9. AGE CHAMPIONSHIP FLEECE SHOW CLASSES

Suri Classes

SECTION FAOSOO			
SECTION FAHOSJO (mandatory)		SECTION FAHOSIO (mandatory)	
Skirted Fleece 6 to under 12 months		Skirted Fleece 12 to under 18 months	
FADWSJO	White	FADWSIO	White
FADLSJO	Light Fawn	FADLSIO	Light Fawn
FADFSJO	Medium/Dark Fawn	FADFSIO	Medium/Dark Fawn
FADBSJO	Brown	FADBSIO	Brown
FADRSJO	Roan	FADRSIO	Roan
FADGSJO	Grey	FADGSIO	Grey

FADKSJO	Black	FADKSIO	Black
FADYSJO	Fancy	FADYSIO	Fancy
Champion Skirted Fleece 6 to under 12 months (optional)		Champion Skirted Fleece 12 to under 18 months (optional)	
Reserve Champion Skirted Fleece 6 to under 12 months (optional)		Champion Skirted Fleece 12 to under 18 months (optional)	
SECTION FAHOSAO (mandatory)		SECTION FAHOSSO (mandatory) *	
Skirted Fleece 18 to under 30 months		Skirted Fleece 30 months and over	
FADWSAO	White	FADWSSO	White
FADLSAO	Light Fawn	FADLSSO	Light Fawn
FADFSAO	Medium/Dark Fawn	FADFSSO	Medium/Dark Fawn
FADBSAO	Brown	FADBSSO	Brown
FADRSAO	Roan	FADRSSO	Roan
FADGSAO	Grey	FADGSSO	Grey
FADKSAO	Black	FADKSSO	Black
FADYSAO	Fancy	FADYSSO	Fancy
Champion Skirted Fleece 18 to under 30months (optional)		Champion Skirted Fleece 18 months and over (optional)	
Reserve Champion Skirted Fleece 18 to under 30 months (optional)		Champion Skirted Fleece 18 months and over (optional)	
SECTION FAHOSMO (optional)		SECTION FAHOSGO (optional)	
Skirted Fleece 48 to under 60 months		Skirted Fleece 60 months and over	
FADWSMO	White	FADWSGO	White
FADLSMO	Light Fawn	FADLSGO	Light Fawn
FADFSMO	Medium/Dark Fawn	FADFSGO	Medium/Dark Fawn
FADBSMO	Brown	FADBSGO	Brown
FADRSMO	Roan	FADRSGO	Roan
FADGSMO	Grey	FADGSGO	Grey
FADKSMO	Black	FADKSGO	Black
FADYSMO	Fancy	FADYSGO	Fancy
Champion Skirted Fleece 18 to under 30 months (optional)		Champion Skirted Fleece 18 months and over (optional)	
Reserve Champion Skirted Fleece 18 to under 30 months (optional)		Champion Skirted Fleece 18 months and over (optional)	

FADBHJO	Brown	FADBHIO	Brown
FADRHJO	Roan	FADRHIO	Roan
FADGHJO	Grey	FADGHIO	Grey
FADKHJO	Black	FADKHIO	Black
FADYHJO	Fancy	FADYHIO	Fancy
Champion Skirted Fleece 6 to under 12 months (optional)		Champion Skirted Fleece 12 to under 18 months (optional)	
Reserve Champion Skirted Fleece 6 to under 12 months (optional)		Champion Skirted Fleece 12 to under 18 months (optional)	
SECTION FAHOHAO (mandatory)		SECTION FAHOHSO (mandatory) *	
Skirted Fleece 18 to under 30 months		Skirted Fleece 30 months and over	
FADWHAO	White	FADWHSO	White
FADLHAO	Light Fawn	FADLHSO	Light Fawn
FADFHAO	Medium/Dark Fawn	FADFHSO	Medium/Dark Fawn
FADBHAO	Brown	FADBHSO	Brown
FADRHAO	Roan	FADRHSO	Roan
FADGHAO	Grey	FADGHSO	Grey
FADKHAO	Black	FADKHSO	Black
FADYHAO	Fancy	FADYHSO	Fancy
Champion Skirted Fleece 18 to under 30months (optional)		Champion Skirted Fleece 18 months and over (optional)	
Reserve Champion Skirted Fleece 18 to under 30 months (optional)		Champion Skirted Fleece 18 months and over (optional)	
SECTION FAHOHMO (optional)		SECTION FAHOHGO (optional)	
Skirted Fleece 48 to under 60 months		Skirted Fleece 60 months and over	
FADWHMO	White	FADWHGO	White
FADLHMO	Light Fawn	FADLHGO	Light Fawn
FADFHMO	Medium/Dark Fawn	FADFHGO	Medium/Dark Fawn
FADBHMO	Brown	FADBHGO	Brown
FADRHMO	Roan	FADRHGO	Roan
FADGHMO	Grey	FADGHGO	Grey
FADKHMO	Black	FADKHGO	Black

FADYHMO	Fancy	FADYHGO	Fancy
Champion Skirted Fleece 18 to under 30 months (optional)		Champion Skirted Fleece 18 months and over (optional)	
Reserve Champion Skirted Fleece 18 to under 30 months (optional)		Champion Skirted Fleece 18 months and over (optional)	
Champion Huacaya Fleece (mandatory)			
Reserve Champion Huacaya Fleece (mandatory)			
Supreme Champion Huacaya (optional)			
BEST IN COLOUR HUACAYA FLEECE (optional)			
Best White Huacaya Fleece in Show			
Best Light Fawn Huacaya Fleece in Show			
Best Medium/Dark Fawn Huacaya Fleece in Show			
Best Brown Huacaya Fleece in Show			
Best Roan Huacaya Fleece in Show			
Best Grey Huacaya Fleece in Show			
Best Fancy Huacaya Fleece in Show			
Best Fancy Huacaya Fleece in Show			
PROGENY CLASSES (optional)			
SECTION FAPSOD		SECTION HAPHOS	
FADPHOD	Dam's Progeny	HADPHOS	Sire's Progeny
		Most Valuable Commercial Fleece Suri	

* Skirted Fleece 30 months and over section FAOSSO, and the corresponding classes should be changed to 30 to under 48 months if the optional sections FAOSMO Skirted Fleece 48 to under 60 months and FAOSGO Skirted Fleece 60 months and over and the corresponding classes are included.

Additional Fleece Championships for Major Shows

Best Fleece in Show
Most Valuable Commercial Fleece

4.10. COLOUR CHAMPIONSHIP HALTER SHOW CLASSES

Suri Classes

SECTIONS HCHWSOF and HCHWSOM (mandatory)			
White Suri			
HCDWSJF	Junior 6 to under 12 months Female	HCDWSJM	Junior 6 to under 12 months Male
HCDWSIF	Intermediate 12 to under 18 months Female	HCDWSIM	Intermediate 12 to under 18 months Male
HCDWSAF	Adult 18 months to under 30 months Female	HCDWSAM	Adult 18 months to under 30 months Male
HCDWSSF	Senior 30 months to under 48 months Female	HCDWSSM	Senior 30 months to under 48 months Male
HCDWSMF	Mature 48 months and over Female	HCWSMM	Mature 48 months and over Male
Champion White Suri Female (Mandatory)		Champion White Suri Male (Mandatory)	
Reserve Champion White Suri Female (Optional)		Reserve Champion White Suri Male (Optional)	
Supreme White Suri			
SECTION HCHLSOF and HCHLSOM (mandatory)			
Light Fawn Suri			
HCDLSJF	Junior 6 to under 12 months Female	HCDLSJM	Junior 6 to under 12 months Male
HCDLSIF	Intermediate 12 to under 18 months Female	HCDLSIM	Intermediate 12 to under 18 months Male
HCDLSAF	Adult 18 months to under 30 months Female	HCDLSAM	Adult 18 months to under 30 months Male
HCDLSSF	Senior 30 months to under 48 months Female	HCDLSSM	Senior 30 months to under 48 months Male
HCDLSMF	Mature 48 months and over Female	HCDLSMM	Mature 48 months and over Male
Champion Light Fawn Suri Female (Mandatory)		Champion Light Fawn Suri Male (Mandatory)	
Reserve Champion Light Fawn Suri Female (Optional)		Reserve Champion Light Fawn Suri Male (Optional)	
Supreme Light Fawn Suri			
SECTION HCFSOO (mandatory)			

Medium/Dark Fawn Suri			
HCDFSJF	Junior 6 to under 12 months Female	HCDFSJM	Junior 6 to under 12 months Male
HCDFSIF	Intermediate 12 to under 18 months Female	HCDFSIM	Intermediate 12 to under 18 months Male
HCDFSAF	Adult 18 months to under 30 months Female	HCDFSAM	Adult 18 months to under 30 months Male
HCDFSSF	Senior 30 months to under 48 months Female	HCDFSSM	Senior 30 months to under 48 months Male
HCDFSMF	Mature 48 months and over Female	HCDFSMM	Mature 48 months and over Male
Champion Medium/Dark Fawn Suri Female (Mandatory)		Champion Medium/Dark Fawn Suri Male (Mandatory)	
Reserve Champion Medium/Dark Fawn Suri Female (Optional)		Reserve Champion Medium/Dark Fawn Suri Male (Optional)	
Supreme Medium/Dark Fawn Suri			
SECTION HCHBSOF and HCHBSOM (mandatory)			
Brown Suri			
HCDBSJF	Junior 6 to under 12 months Female	HCDBSJM	Junior 6 to under 12 months Male
HCDBSIF	Intermediate 12 to under 18 months Female	HCDBSIM	Intermediate 12 to under 18 months Male
HCDBSAF	Adult 18 months to under 30 months Female	HCDBSAM	Adult 18 months to under 30 months Male
HCDBSSF	Senior 30 months to under 48 months Female	HCDBSSM	Senior 30 months to under 48 months Male
HCDBSMF	Mature 48 months and over Female	HCDBSMM	Mature 48 months and over Male
Champion Brown Suri Female (Mandatory)		Champion Brown Suri Male (Mandatory)	
Reserve Champion Brown Suri Female (Optional)		Reserve Champion Brown Suri Male (Optional)	
Supreme Brown Suri			
SECTION HCHRSOF and HCHRSOM (mandatory)			
Roan Suri			
HCDRSJF	Junior 6 to under 12 months Female	HCDRSJM	Junior 6 to under 12 months Male
HCDRSIF	Intermediate 12 to under 18 months Female	HCDRSIM	Intermediate 12 to under 18 months Male
HCDRSAF	Adult 18 months to under 30 months Female	HCDRSAM	Adult 18 months to under 30 months Male
HCDRSSF	Senior 30 months to under 48 months Female	HCDRSSM	Senior 30 months to under 48 months Male
HCDRSMF	Mature 48 months and over Female	HCDRSMM	Mature 48 months and over Male
Champion Roan Suri Female (Mandatory)		Champion Roan Suri Male (Mandatory)	
Reserve Champion Roan Suri Female (Optional)		Reserve Champion Roan Suri Male (Optional)	

Supreme Roan Suri			
SECTION HCHGSOF and HCHGSOM (mandatory)			
Grey Suri			
HCDGSJF	Junior 6 to under 12 months Female	HCDGSJM	Junior 6 to under 12 months Male
HCDGSIF	Intermediate 12 to under 18 months Female	HCDGSIM	Intermediate 12 to under 18 months Male
HCDGSAF	Adult 18 months to under 30 months Female	HCDGSAM	Adult 18 months to under 30 months Male
HCDGSSF	Senior 30 months to under 48 months Female	HCDGSSM	Senior 30 months to under 48 months Male
HCDGSMF	Mature 48 months and over Female	HCDGSMM	Mature 48 months and over Male
Champion Grey Suri Female (Mandatory)		Champion Grey Suri Male (Mandatory)	
Reserve Champion Grey Suri Female (Optional)		Reserve Champion Grey Suri Male (Optional)	
Supreme Grey Suri			
SECTION HCHSOF and HCHKSOM (mandatory)			
Black Suri			
HCDKSJF	Junior 6 to under 12 months Female	HCDKSJM	Junior 6 to under 12 months Male
HCDKSIF	Intermediate 12 to under 18 months Female	HCDKSIM	Intermediate 12 to under 18 months Male
HCDKSAF	Adult 18 months to under 30 months Female	HCDKSAM	Adult 18 months to under 30 months Male
HCDKSSF	Senior 30 months to under 48 months Female	HCDKSSM	Senior 30 months to under 48 months Male
HCDKSMF	Mature 48 months and over Female	HCDKSMM	Mature 48 months and over Male
Champion Black Suri Female (Mandatory)		Champion Black Suri Male (Mandatory)	
Reserve Champion Black Suri Female (Optional)		Reserve Champion Black Suri Male (Optional)	
Supreme Black Suri			
SECTION HCHYSOF and HCHYSOM (mandatory)			
Fancy Suri			
HCDYSJF	Junior 6 to under 12 months Female	HCDYSJM	Junior 6 to under 12 months Male
HCDYSIF	Intermediate 12 to under 18 months Female	HCDYSIM	Intermediate 12 to under 18 months Male
HCDYSAF	Adult 18 months to under 30 months Female	HCDYSAM	Adult 18 months to under 30 months Male
HCDYSSF	Senior 30 months to under 48 months Female	HCDYSSM	Senior 30 months to under 48 months Male

HCDYSMF	Mature 48 months and over Female	HCDYSMM	Mature 48 months and over Male
Champion Fancy Suri Female (Mandatory)		Champion Fancy Suri Male (Mandatory)	
Reserve Champion Fancy Suri Female (Optional)		Reserve Champion Fancy Suri Male (Optional)	
Supreme Fancy Suri			
Best Suri in Show (Optional)			
Sire's Progeny (optional)		Wether (optional)	
HCPWSOS	Sire's Progeny - White	HCWSOW	White wether - all ages
HCPLSOS	Sire's Progeny – Light Fawn	HCLSOW	Light Fawn wether – all ages
HCPFSOS	Sire's Progeny – Med/Dark Fawn	HCFSOW	Med/Dark Fawn wether - all ages
HCPBSOS	Sire's Progeny - Brown	HCBSOW	Brown wether - all ages
HCPRSOS	Sire's Progeny - Roan	HCRSOW	Roan wether - all ages
HCPGSOS	Sire's Progeny - Grey	HCGSOW	Grey wether - all ages
HCPKSOS	Sire's Progeny - Black	HCKSOW	Black wether - all ages
HCPYSOS	Sire's Progeny - Fancy	HCYSOW	Fancy wether - all ages

Huacaya Classes

SECTION HCHWHOF and HCHWHOM (mandatory)			
White Huacaya			
HCDWHJF	Junior 6 to under 12 months Female	HCDWHJM	Junior 6 to under 12 months Male
HCDWHIF	Intermediate 12 to under 18 months Female	HCDWHIM	Intermediate 12 to under 18 months Male
HCDWHAF	Adult 18 months to under 30 months Female	HCDDWHAM	Adult 18 months to under 30 months Male
HCDWHSF	Senior 30 months to under 48 months Female	HCWHSM	Senior 30 months to under 48 months Male
HCDWHMF	Mature 48 months and over Female	HCDWHMM	Mature 48 months and over Male
Champion White Huacaya Female (Mandatory)		Champion White Huacaya Male (Mandatory)	
Reserve Champion White Huacaya Female (Optional)		Reserve Champion White Huacaya Male (Optional)	
Supreme White Huacaya			
SECTION HCHLHOF and HCHLHOM (mandatory)			
Light Fawn Huacaya			

HCDLHJF	Junior 6 to under 12 months Female	HCDLHJM	Junior 6 to under 12 months Male
HCDLHIF	Intermediate 12 to under 18 months Female	HCDLHIM	Intermediate 12 to under 18 months Male
HCDLHAF	Adult 18 months to under 30 months Female	HCDLHAM	Adult 18 months to under 30 months Male
HCDLHSF	Senior 30 months to under 48 months Female	HCDLHSM	Senior 30 months to under 48 months Male
HCDLHMF	Mature 48 months and over Female	HCDLHMM	Mature 48 months and over Male
Champion Light Fawn Huacaya Female (Mandatory)		Champion Light Fawn Huacaya Male (Mandatory)	
Reserve Champion Light Fawn Huacaya Female (Optional)		Reserve Champion Light Fawn Huacaya Male (Optional)	
Supreme Light Fawn Huacaya			
SECTION HCHFHO and HCFHOM (mandatory)			
Medium/Dark Fawn Huacaya			
HCDFHJF	Junior 6 to under 12 months Female	HCDFHJM	Junior 6 to under 12 months Male
HCDFHIF	Intermediate 12 to under 18 months Female	HCDFHIM	Intermediate 12 to under 18 months Male
HCDFHAF	Adult 18 months to under 30 months Female	HCDFHAM	Adult 18 months to under 30 months Male
HCDFHSF	Senior 30 months to under 48 months Female	HCDFHSM	Senior 30 months to under 48 months Male
HCDFHMF	Mature 48 months and over Female	HCDFHMM	Mature 48 months and over Male
Champion Medium/Dark Fawn Huacaya Female (Mandatory)		Champion Medium/Dark Fawn Huacaya Male (Mandatory)	
Reserve Champion Medium/Dark Fawn Huacaya Female (Optional)		Reserve Champion Medium/Dark Fawn Huacaya Male (Optional)	
Supreme Medium/Dark Fawn Huacaya			
SECTION HCHBHO and HCHBOM (mandatory)			
Brown Huacaya			
HCDBHJF	Junior 6 to under 12 months Female	HCDBHJM	Junior 6 to under 12 months Male
HCDBHIF	Intermediate 12 to under 18 months Female	HCDBHIM	Intermediate 12 to under 18 months Male
HCDBHAF	Adult 18 months to under 30 months Female	HCDBHAM	Adult 18 months to under 30 months Male
HCDBHSF	Senior 30 months to under 48 months Female	HCDBHSM	Senior 30 months to under 48 months Male
HCDBHMF	Mature 48 months and over Female	HCDBHMM	Mature 48 months and over Male
Champion Brown Huacaya Female (Mandatory)		Champion Brown Huacaya Male (Mandatory)	
Reserve Champion Brown Huacaya Female (Optional)		Reserve Champion Brown Huacaya Male (Optional)	
Supreme Brown Huacaya			

SECTION HCHRHOF and HCHRHOM (mandatory)			
Roan Huacaya			
HCDRHJF	Junior 6 to under 12 months Female	HCDRHJM	Junior 6 to under 12 months Male
HCDRHIF	Intermediate 12 to under 18 months Female	HCDRHIM	Intermediate 12 to under 18 months Male
HCDRHAF	Adult 18 months to under 30 months Female	HCDRHAM	Adult 18 months to under 30 months Male
HCDRHSF	Senior 30 months to under 48 months Female	HCDRHSM	Senior 30 months to under 48 months Male
HCDRHMF	Mature 48 months and over Female	HCDRHMM	Mature 48 months and over Male
Champion Roan Huacaya Female (Mandatory)		Champion Roan Huacaya Male (Mandatory)	
Reserve Champion Roan Huacaya Female (Optional)		Reserve Champion Roan Huacaya Male (Optional)	
Supreme Roan Huacaya			
SECTION HCHGHOF and HCHGHOM (mandatory)			
Grey Huacaya			
HCDGHJF	Junior 6 to under 12 months Female	HCDGHJM	Junior 6 to under 12 months Male
HCDGHIF	Intermediate 12 to under 18 months Female	HCDGHIM	Intermediate 12 to under 18 months Male
HCDGHAF	Adult 18 months to under 30 months Female	HCDGHAM	Adult 18 months to under 30 months Male
HCDGHSF	Senior 30 months to under 48 months Female	HCDGHSM	Senior 30 months to under 48 months Male
HCDGHMF	Mature 48 months and over Female	HCDGHMM	Mature 48 months and over Male
Champion Grey Huacaya Female (Mandatory)		Champion Grey Huacaya Male (Mandatory)	
Reserve Champion Grey Huacaya Female (Optional)		Reserve Champion Grey Huacaya Male (Optional)	
Supreme Grey Huacaya			
SECTION HCHKHOF and HCHKOM (mandatory)			
Black Huacaya			
HCDKHJF	Junior 6 to under 12 months Female	HCDKHJM	Junior 6 to under 12 months Male
HCDKHIF	Intermediate 12 to under 18 months Female	HCDKHIM	Intermediate 12 to under 18 months Male
HCDKHAF	Adult 18 months to under 30 months Female	HCDKHAM	Adult 18 months to under 30 months Male
HCDKHSF	Senior 30 months to under 48 months Female	HCDKHSM	Senior 30 months to under 48 months Male
HCDKHMf	Mature 48 months and over Female	HCDKHMM	Mature 48 months and over Male

Champion Black Huacaya Female (Mandatory)		Champion Black Huacaya Male (Mandatory)	
Reserve Champion Black Huacaya Female (Optional)		Reserve Champion Black Huacaya Male (Optional)	
Supreme Black Huacaya			
SECTION HCHYHOF and HCHYHOM (mandatory)			
Fancy Huacaya			
HCDYHJF	Junior 6 to under 12 months Female	HCDYHJM	Junior 6 to under 12 months Male
HCDYHIF	Intermediate 12 to under 18 months Female	HCDYHIM	Intermediate 12 to under 18 months Male
HCDYHAF	Adult 18 months to under 30 months Female	HCDYHAM	Adult 18 months to under 30 months Male
HCDYHSF	Senior 30 months to under 48 months Female	HCDYHSM	Senior 30 months to under 48 months Male
HCDYHMF	Mature 48 months and over Female	HCDYHMM	Mature 48 months and over Male
Champion Fancy Huacaya Female (Mandatory)		Champion Fancy Huacaya Male (Mandatory)	
Reserve Champion Fancy Huacaya Female (Optional)		Reserve Champion Fancy Huacaya Male (Optional)	
Supreme Fancy Huacaya			
Best Huacaya in Show (Optional)			
Sire's Progeny (optional)		Wether (optional)	
HCPWHOS	Sire's Progeny - White	HCWHOW	White wether - all ages
HCPLHOS	Sire's Progeny – Light Fawn	HCLHOW	Light Fawn wether – all ages
HCPFHOS	Sire's Progeny – Med/Dark Fawn	HCFHOW	Med/Dark Fawn wether - all ages
HCPBHOS	Sire's Progeny - Brown	HCBHOW	Brown wether - all ages
HCPRHOS	Sire's Progeny - Roan	HCRHOW	Roan wether - all ages
HCPGHOS	Sire's Progeny - Grey	HCGHOW	Grey wether - all ages
HCPKHOS	Sire's Progeny - Black	HCKHOW	Black wether - all ages
HCPYHOS	Sire's Progeny - Fancy	HCYHOW	Fancy wether - all ages

4.11. COLOUR CHAMPIONSHIP FLEECE SHOW CLASSES

Suri Classes

SECTION FCHWSOO (mandatory)	White Suri	SECTION FCHLSOO (mandatory)	Light Fawn Suri
FCDWSJO	Skirted Fleece 6 to under 12 months	FCDLSJO	Skirted Fleece 6 to under 12 months
FCDWSIO	Skirted Fleece 12 to under 18 months	FCDLSIO	Skirted Fleece 12 to under 18 months
FCDWSAO	Skirted Fleece 18 to under 30 months	FCDLSAO	Skirted Fleece 18 to under 30 months
FCDWSSO	Skirted Fleece 30 months and over	FCDLSSO	Skirted Fleece 30 months and over
Supreme White Suri Fleece		Supreme Light Fawn Suri Fleece	
SECTION FCHFSOO (mandatory)	Med/Dark Fawn Suri	SECTION FCHBSOO (mandatory)	Brown Suri
FCDFSJO	Skirted Fleece 6 to under 12 months	FCDBSJO	Skirted Fleece 6 to under 12 months
FCDFSIO	Skirted Fleece 12 to under 18 months	FCDBSIO	Skirted Fleece 12 to under 18 months
FCDFSAO	Skirted Fleece 18 to under 30 months	FCDBSAO	Skirted Fleece 18 to under 30 months
FCDFSSO	Skirted Fleece 30 months and over	FCDBSSO	Skirted Fleece 30 months and over
Supreme Medium/Dark Fawn Suri Fleece		Supreme Brown Suri Fleece	
SECTION FCHRSOO (mandatory)	Roan Suri	SECTION FCHGSOO (mandatory)	Grey Suri
FCDRSJO	Skirted Fleece 6 to under 12 months	FCDGSJO	Skirted Fleece 6 to under 12 months
FCDRSIO	Skirted Fleece 12 to under 18 months	FCDGSIO	Skirted Fleece 12 to under 18 months
FCDRSAO	Skirted Fleece 18 to under 30 months	FCDGSAO	Skirted Fleece 18 to under 30 months
FCDRSSO	Skirted Fleece 30 months and over	FCDGSSO	Skirted Fleece 30 months and over
Supreme Roan Suri Fleece		Supreme Grey Suri Fleece	
SECTION FCHKSOO (mandatory)	Black Suri	SECTION FCHYSOO (mandatory)	Fancy Suri
FCDKSJO	Skirted Fleece 6 to under 12 months	FCDYSJO	Skirted Fleece 6 to under 12 months
FCDKSIO	Skirted Fleece 12 to under 18 months	FCDYSIO	Skirted Fleece 12 to under 18 months
FCDKSAO	Skirted Fleece 18 to under 30 months	FCDYSAO	Skirted Fleece 18 to under 30 months
FCDKSSO	Skirted Fleece 30 months and over	FCDYSSO	Skirted Fleece 30 months and over
Supreme Black Suri Fleece		Supreme Fancy Suri Fleece	

Best Suri Fleece in Show (Optional)

Huacaya Classes

SECTION FCHWHOO (mandatory)	White	SECTION FCHLHOO (mandatory)	Light Fawn Huacaya
FCDWHJO	Skirted Fleece 6 to under 12 months	FCDLHJO	Skirted Fleece 6 to under 12 months
FCDWHIO	Skirted Fleece 12 to under 18 months	FCDLHIO	Skirted Fleece 12 to under 18 months
FCDWHAO	Skirted Fleece 18 to under 30 months	FCDLHAO	Skirted Fleece 18 to under 30 months
FCDWHSO	Skirted Fleece 30 months and over	FCDLHSO	Skirted Fleece 30 months and over
Supreme White Huacaya Fleece		Supreme Light Fawn Huacaya Fleece	
SECTION FCHFHOO (mandatory)	Med/Dark Fawn Huacaya	SECTION FCHBHOO (mandatory)	Brown Huacaya
FCDFHJO	Skirted Fleece 6 to under 12 months	FCDBHJO	Skirted Fleece 6 to under 12 months
FCDFHIO	Skirted Fleece 12 to under 18 months	FCDBHIO	Skirted Fleece 12 to under 18 months
FCDFHAO	Skirted Fleece 18 to under 30 months	FCDBHAO	Skirted Fleece 18 to under 30 months
FCDFHSO	Skirted Fleece 30 months and over	FCDBHSO	Skirted Fleece 30 months and over
Supreme Medium/Dark Fawn Huacaya Fleece		Supreme Brown Huacaya Fleece	
SECTION FCHRHOO (mandatory)	Roan Huacaya	SECTION FCHGHOO (mandatory)	Grey Huacaya
FCDRHJO	Skirted Fleece 6 to under 12 months	FCDGHJO	Skirted Fleece 6 to under 12 months
FCDRHIO	Skirted Fleece 12 to under 18 months	FCDGHIO	Skirted Fleece 12 to under 18 months
FCDRHAO	Skirted Fleece 18 to under 30 months	FCDGHAO	Skirted Fleece 18 to under 30 months
FCDRHSO	Skirted Fleece 30 months and over	FCDGHSO	Skirted Fleece 30 months and over
Supreme Roan Huacaya Fleece		Supreme Grey Huacaya Fleece	
SECTION FCHKHOO (mandatory)	Black Huacaya	SECTION FCHYHOO (mandatory)	Fancy Huacaya
FCDKHJO	Skirted Fleece 6 to under 12 months	FCDYHJO	Skirted Fleece 6 to under 12 months
FCDKHIO	Skirted Fleece 12 to under 18 months	FCDYHIO	Skirted Fleece 12 to under 18 months
FCDKHAO	Skirted Fleece 18 to under 30 months	FCDYHAO	Skirted Fleece 18 to under 30 months
FCDKHSO	Skirted Fleece 30 months and over	FCDYHSO	Skirted Fleece 30 months and over
Supreme Black Huacaya Fleece		Supreme Fancy Huacaya Fleece	

<i>Best Huacaya Fleece in Show (Optional)</i>

4.12. ALPACA YOUTH EVENTS

To support eligibility to enter National and State Youth competitions, all Alpaca Youth Events will be conducted in accordance with **REFERENCE E: ALPACA YOUTH COMPETITION GUIDELINES**, which includes:

- a) Paraders' Competition.
- b) Young Judges' Competition (Agricultural Shows Association rules also apply, and may be found at: <https://agshowsaustralia.org.au/member-resources/national-competitions-guidelines/>).
- c) Junior Handlers' or Schools' Competition, for which local guidance may be used or based on the Stockmanship component of the Paraders' Competition.

4.13. STANDARD AWARDS AND RIBBONS

Championship Awards

Sashes will be awarded to the following in both halter and fleece shows:

- a) Supreme Champions
- b) Champions
- c) Reserve Champions
- d) Best in Colour
- e) Progeny Class Champions
- f) Most Valuable Commercial Fleece (fleece show only)

Non-Championship Awards

Sashes may be awarded for:

- a) Best Wether
- b) Best Junior Handler
- c) Champion Young Judge

Ribbon numbers and Colours

The minimum number of ribbons to be awarded in each class is detailed below:

	Awards and Ribbon Colours					
Up to 8 exhibits	1st	2nd	3rd			HC*
9 to 12 exhibits	1st	2nd	3rd	4th		HC*
13 to 19 exhibits	1st	2nd	3rd	4th	5th	HC*

HC* - Highly Commended awards may be given at any time at the Judge's discretion to reward the presence of extra depth and quality in the line-up of exhibits being shown. More than one Highly Commended award may be given in any one class.

Fleece Awards

In addition to the above,

- a) the Judge should give consideration as to whether first place should be awarded if the fleece has achieved less than 60 points.
- b) the Judge should give consideration as to whether a championship should be awarded if the fleece has achieved less than 70 points.
- c) at the Judge's discretion a Highly Commended ribbon may be awarded to all non placing fleeces which have achieved 80 points or more.

5. JUDGING CRITERIA

5.1. HALTER CLASSES

Halter class judging is scored as follows:

- a) 60% on fleece characteristics.
- b) 40% on conformation.

As the exhibits enter the show ring, the Judge will look for relevant conformation attributes and potential weaknesses:

- a) correct conformation. Does the exhibit walk freely? Are there any visible leg problems? Any other issues?
- b) presence, overall impression. Is the exhibit true to the Breed Standard as detailed in **Section 6** of this Manual?

After all exhibits in a class, or across classes if entering the show ring together, are lined up, the Judge will carefully and consistently examine the fleeces and look again at correct conformation and presentation. The Judge will be looking for:

Fleece Characteristics

- fineness
- density
- handle
- lustre
- uniformity of micron
- uniformity of length
- character (crimp and style), pertains to huacaya exhibits.
- style (lock formation), pertains to suri exhibits.
- lack of guard hair
- uniformity of colour
- fleece coverage

Conformation Characteristics

- correct bone structure
- balance and proportion
- growth for age
- condition

- head, legs and topline
- reproductive capabilities

5.2. PROGENY HALTER CLASSES

The aim of the progeny halter class is to recognise the prepotency of positive fleece and conformation traits from either a dam or sire. The placing order will be based on the groups' overall levels of desirable attributes. Whilst similarity between the phenotypes of the individuals in each progeny group is desirable, this shall be a secondary consideration following the consideration of high-quality fleece and conformation traits, even if a group displaying the preferred traits are not as uniform in their appearance.

5.3. FLEECE CLASSES

Fleece classes will be judged according to the criteria shown on Fleece Judging Score Cards as detailed in APPENDIX C, that applies to each huacaya and suri.

The Judge will score the fleece, taking all categories into consideration. The Judge will be looking for a well presented, properly skirted fleece with lustre and the fine, soft handle of uniform micron. The staple should have clear formation throughout. The fleece is weighed by the stewards prior to judging and will be handled in a manner which is consistent across all fleeces. All fleece weights shall consider the age of the fleece and for the purpose of allocating points, the fleece weights shall be annualised. In skirting, there is a balance between discarding too much fibre adversely affecting the fleece weight and keeping the clean fleece weight up, but leaving lesser quality, uneven fibres which may detract from the overall fleece. Where appropriate the fleece micron shall be determined by testing.

5.4. PROGENY FLEECE CLASSES

Progeny fleece classes will be judged relatively, not using a new scorecard, and judged by all the fleece Judges who are judging at the show. Decisions on final class placements will be made by consensus if there are multiple Judges. The judging criteria for progeny fleece classes shall include:

- a) consistency of positive fleece traits exhibited by both fleeces in the group.
- b) uniformity of positive fleece characteristics exhibited by both fleeces in the group.
- c) uniformity of type and style exhibited by both fleeces in the group.
- d) absence of negative traits in both fleeces in the group.

5.5. MOST VALUABLE COMMERCIAL FLEECE CLASSES

The Most Valuable Commercial Fleeces classes will be judged on a commercial basis for overall dollar value of each fleece based on current prices that can be achieved on local and/or international markets. The valuation is calculated taking into consideration:

- a) fineness.
- b) length.

- c) overall excellence (style).
- d) faults.
- e) yield (impurities).
- f) fleece weight.

No fleece weight annualisation will take place in this class as the fleece is judged solely on how it presents for commercial processing.

It is mandatory that all fleeces entered in the Most Valuable Commercial Fleece classes are fleece tested.

5.6. ALPACA YOUTH EVENTS

To support eligibility to enter National and State Young Judge competitions, all Alpaca Youth Events will be conducted in accordance with **REFERENCE E: ALPACA YOUTH COMPETITION GUIDELINES**.

6. ALPACA BREED STANDARD

6.1. CONFORMATION

The alpaca is a tall, graceful animal with a smoothly blended body and upright stance. It carries its head high. It is strong boned and vigorous. It has good conformation with all its parts in correct proportion and when true to type has the characteristics described in this Standard.

Head

The head has a strong appearance and is not coarse. It is neatly formed, of medium length and with a square muzzle. The eyes are oval in shape, alert and set well apart. They protrude slightly from their sockets, giving the appearance of being large and round. They may be blue, brown or black. The nose has two well defined nostrils. The upper lip is divided and mobile. The ears are of medium length, covered with short soft hair, erect and bayonet shaped, pointing forward in the alert stance. Suri ears can be up to 2cm longer than huacaya ears. The jaws fit together well, with the lower incisors meeting the upper dental pad.

Faults:

- muffled face (fibre or hair impeding the animal's vision – particularly after first shearing)
- wry face
- head very narrow
- face hard and open
- roman nose
- lower jaw undershot or overshot.

Neck

The neck is long and slender and continues directly from the line of the backbone, blending smoothly into the shoulder.

Faults:

- length of neck disproportionate to body size (too long or too short)
- neck bent or U-neck.

Forequarters

The chest is broad and deep, well sprung in the fore-rib. The wither is relatively wide where the shoulders meet, well fleshed and set well into the shoulders forming a straight line with the back.

Faults:

- narrow chest
- loose shoulder blades
- in or out at the elbows

- *prominent* wither

Body

The body is deep through the girth, with well sprung ribs. The back is strong, and the top line is slightly convex. The loins are broad, strong and flat, with the back barrel large and deep.

Faults:

- roach back
- sway back
- over long straight back

Hindquarters

The rump is broad with a slightly convex top line. There is good space between the pin bones. The tail is straight, covered with quality fibre, set slightly lower than in other livestock and should cover the genitalia. The thighs are strong and well muscled. The height of the pin bones equals that of the shoulders.

Faults:

- narrow hindquarters
- bent or kinked tail that cannot be manually straightened or where there are no signs of a break or calcification.
- steeply sloping rump

Legs

The fore legs are strong and straight. The hind legs are straight and parallel when viewed from behind. The pasterns are firm and upright. The feet are neat and well formed and bear two forward pointing toes each carrying a long strong toenail. The sole of the foot is covered with a callused membrane.

Faults:

- weak pasterns
- obvious carpal
- cow hocks
- sickle hocks

Udder

The udder should show good capacity, with four working teats.

Faults:

- less or more than four teats
- inverted teat(s) (irrespective of number and position)

Testicles

The scrotum is well attached, relatively small and carries two even sized testes.

Faults:

- testes of uneven size
- testes too small (relative to age)

Height and weight

A mature animal measures from approximately 90 cm at the wither and weighs from approximately 60 kg upwards.

Faults:

- oversized – particularly if llama-like characteristics are present.

Movement

Alpacas should exhibit an even stride length with two distinctive tracks, the hind feet following the front ones.

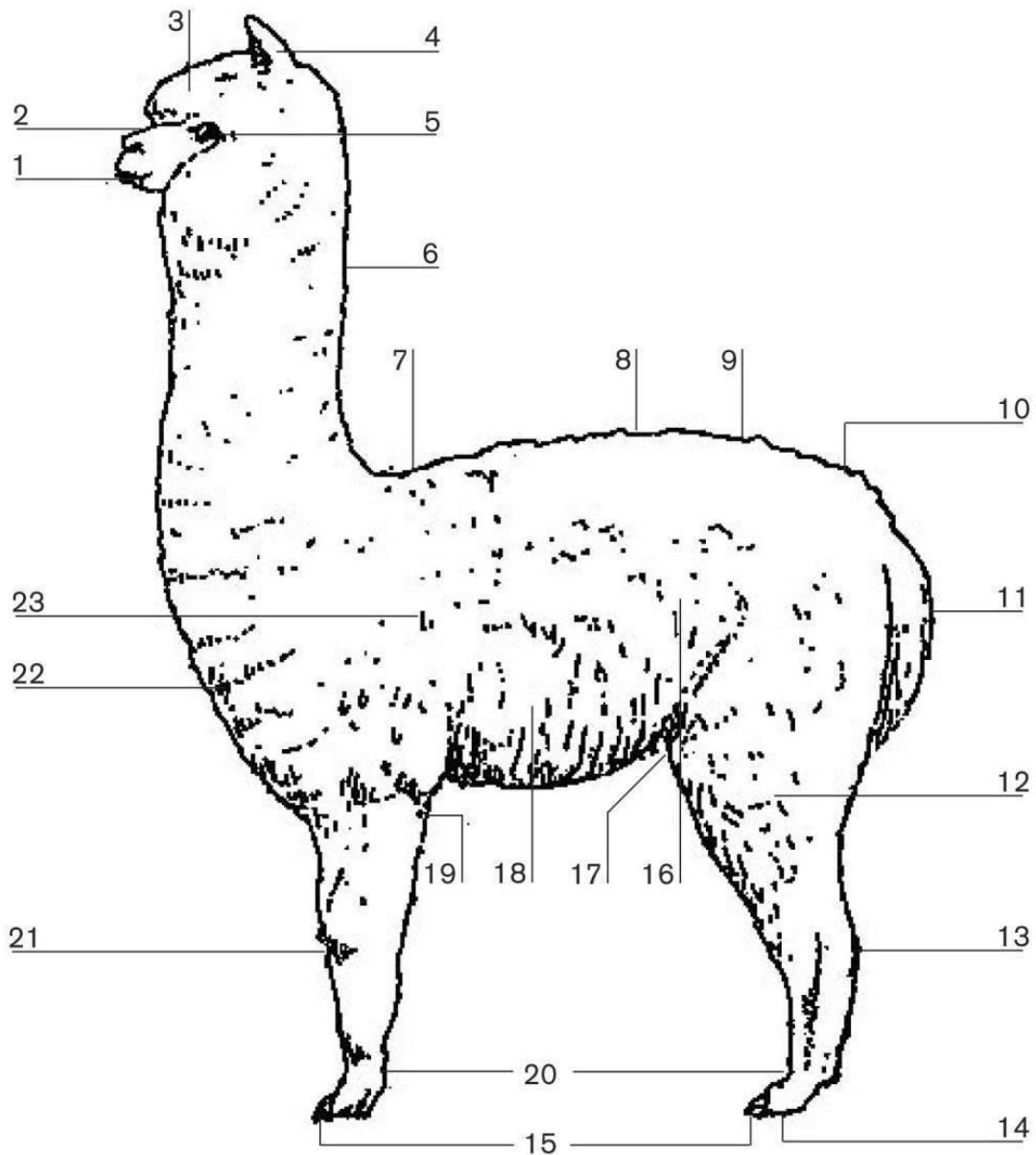
Faults:

- uneven stride length
- paddling on the front feet

Disqualifying faults

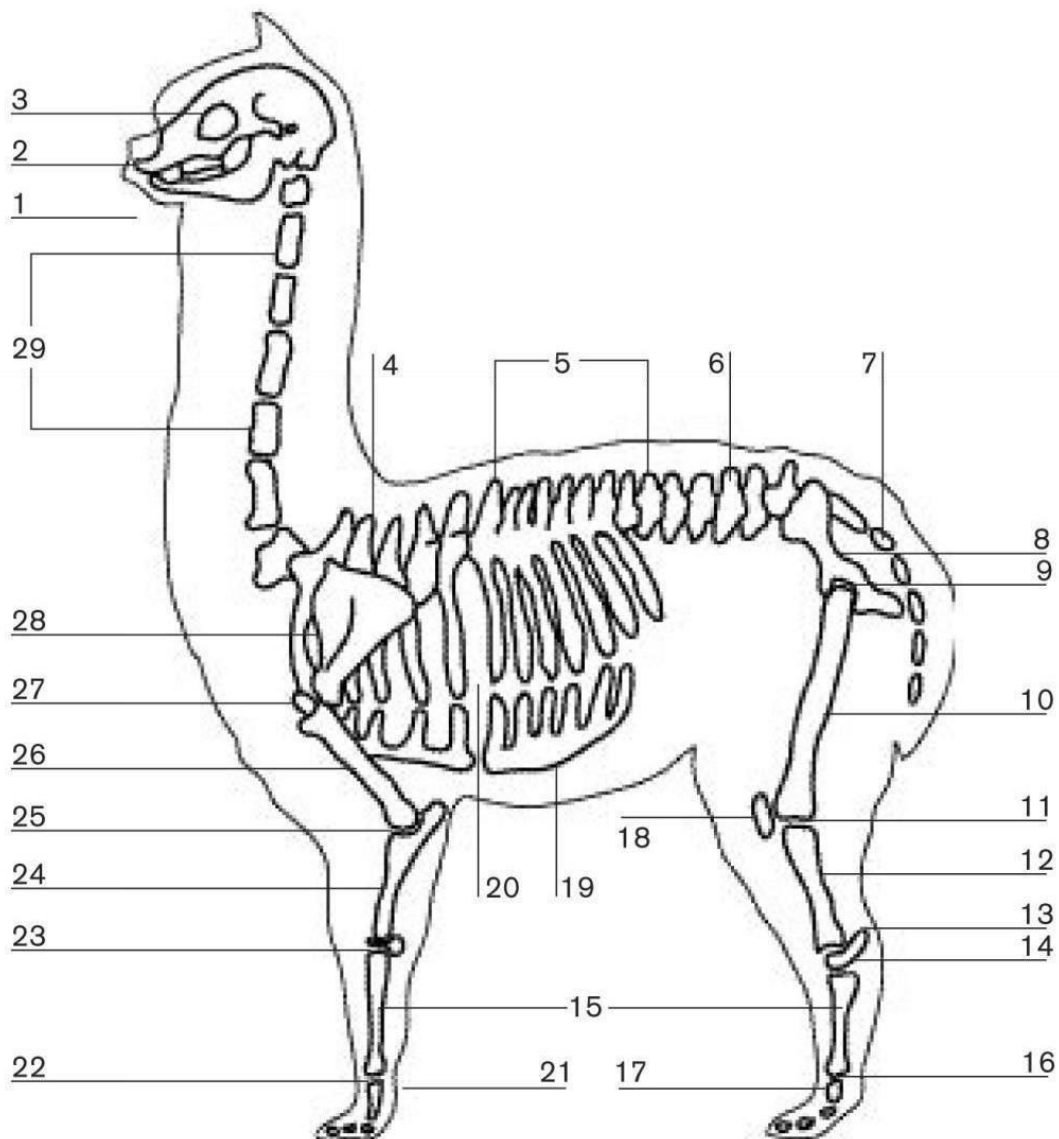
- polydactylism (more than two toes on each foot)
- syndactylism (fusion of the two toes on the same foot)
- fused ears (short stubby ears or fused at the tips)
- banana shaped ears
- tail absent or abnormally short or bent.
- fewer than two testes
- jaw not properly aligned (wry)
- lower jaw overshoot in excess of 3mm.
- jaw undershot in excess of 5mm.
- emaciation
- lice infestation

Points of the Alpaca



- | | | |
|---------------|-------------|---------------------|
| 1. Mouth | 11. Tail | 21. Knee |
| 2. Muzzle | 12. Thigh | 22. Apron/bib/chest |
| 3. Bonnet/bob | 13. Hock | 23. Shoulder |
| 4. Ears | 14. Pad | |
| 5. Eyes | 15. Toenail | |
| 6. Neck | 16. Flank | |
| 7. Withers | 17. Stifle | |
| 8. Back | 18. Ribs | |
| 9. Croup | 19. Elbow | |
| 10. Rump | 20. Pastern | |

Bone Structure of the Alpaca



- | | | |
|-------------------------------|------------------------------|------------------------------|
| 1. Lower jaw (mandible) | 11. Stifle joint | 21. Front pastern |
| 2. Upper jaw (maxilla) | 12. Leg bone (tibia) | 22. Ankle joint (fetlock) |
| 3. Eye socket | 13. Point of the hock | 23. Knee joint (radius) |
| 4. Withers | 14. Hock joint | 24. Forearm (radius) |
| 5. Back (thoracic vertebrae) | 15. Cannon bone (metacarpus) | 25. Elbow joint |
| 6. Loin (lumbar vertebrae) | 16. Ankle joint (fetlock) | 26. Humerus |
| 7. Tail (coccygeal vertebrae) | 17. Hind pastern | 27. Shoulder joint |
| 8. Pelvis | 18. Knee cap (patella) | 28. Shoulder blade (scapula) |
| 9. Hip joint | 19. Breast bone (sternum) | 29. Neck vertebrae |
| 10. Thigh bone (femur) | 20. Ribs | (cervical vertebrae) |

6.2. HUACAYA FLEECE

Huacaya alpacas are distinguishable from suri alpacas in that they carry sheep like fleece, which stands at right angles to the body. The fleece should exhibit a strong wave or crimp across each fibre and have strong staple definition. The alpaca should be well covered with a rounded appearance. Coverage should extend down the legs and up to a bonnet on the head with a clean muzzle and ears.

Characteristics

The most important characteristics of huacaya fleece are:

- **density** – this perhaps the most important as it determines the commerciality of the fleece ie the quantity of saleable fleece to be sold. It also prevents dirt and moisture penetration.
- **fineness and handle** – fineness sets the value of a fleece per unit weight. The finer the fleece the more per kilo it will make. Soft handle goes with fineness. The softer the handle the finer the micron.
- **character** – is closely related to density, as strong crimp definition and staple formation is necessary to achieve heavy fleece weights.
- **lack of medullation** – fleece should not contain broad micron straight medullated fibres, especially through the main blanket. The aim being to eliminate it completely.
- **lustre** – this is the amount of light reflected from the fibre, which enhances its appearance when processed into a garment.

Other determining factors are:

- **uniformity of micron** – processors require fleece with minimum variation in fibre diameter. This also helps to eliminate fleece tenderness (fleece breakage).
- **uniformity of colour** – an even colour is preferred by processors, but allowances need to be made for greys and fawns which can have colour variation.
- **uniformity of length** – the fleece should be of the same length for 12 months growth. The aim is to have the neck fibre match the main blanket in length, thus increasing the weight of the prime fleece.

Colour

Alpaca fleece comes in varying shades of colour from white to black. In between there are shades of fawn, brown, roan and grey. Ideally the alpacas are solid in colour but may be any combination colour.

Faults

- open fleece with no density
- chalkiness
- harsh handle
- medullated fibre
- lack of overall coverage

- tenderness

6.3. SURI FLEECE

The suri carries a silky, soft handling fleece that moves freely, yet hugs the body giving the animal a flatsided appearance. The fleece hangs from a centre part – neck through to tail – with well defined locks forming close to the skin and twisting uniformly to the ends. The overall effect is similar to the drape of a curtain of silk tassels.

Characteristics

The primary characteristics which distinguish a suri are its lock structure, high lustre, silky handle and long staple length. The ideal suri exhibits little medullation, resulting in uniformity throughout the fleece.

The most important characteristics of suri fleece are:

- **lustre and lock structure** (these two qualities define suri fibre) – lustre is the seen or pearliness in the fleece. The lock may be twisted, curled or pencilled. They should be well defined (referred to as architecture), narrow and independent, uniform and form close to the skin. The most highly desirable architecture has a firm uniform twisted lock. The locks should be consistent across the body commencing from the forelock and continuing through to the hocks. When the fleece is opened, the inside locks should uniformly well defined and hang similarly in well formed layers.
- **fineness and handle** – a fine micron fleece has a soft handle. The handle of the suri should also have a silky, slippery feel and be evident throughout the body, ideally including the ears, forelock, muzzle, apron, belly, neck and legs.
- **density** – the hallmark of the ideal suri fleece is its compactness. This is synonymous with high fleece weights. A more rounded appearance can indicate volume (fluffiness) rather than density. Density is evident by gauging the solidity of lock (or thickness in terms of density, not broadness of lock), the number of locks over a relative area as well as the weight of the fleece.
- **lack of medullation** – ideally there should be little or no evidence of medullated fibres in the fleece.
- **lock length** – the lock of a suri is relatively long and its fibre should grow one or two centimetres per year longer than a huacaya of similar age and micron.

Other determining factors are:

- **uniformity of micron** – processors require fleece with minimum variation in fibre diameter. This also helps to eliminate fleece tenderness (fleece breakage).
- **uniformity of colour** – an even colour is preferred by processors, but allowances need to be made for greys and fawns which can have colour variation.
- **uniformity of length** – the fleece should be of the same length for 12 months growth. The aim is to have the neck fibre match the main blanket in length, thus increasing the weight of the prime fleece.

Colour

Alpaca fleece comes in varying shades of colour from white to black. In between there are shades of fawn, brown, roan and grey. Ideally the alpacas are solid in colour but may be any combination colour.

Faults

- flat, open fleece with no lock definition (architecture)
- medullation
- chalkiness or lack of lustre
- short staple length for age of fleece
- coarse handle
- lack of density
- rounded appearance indicating fluffiness rather than density.
- crimp

7. GENERAL INFORMATION FOR EXHIBITORS

7.1. PREPARING AN ALPACA FOR SHOWING

Most stud animals undergo some form of cleaning and preparation for the show ring so that they are shown to their best advantage and the Judge is presented with a clean, well-prepared animal. It is not possible to improve the character of fleece of a lesser quality alpaca by trimming its fleece, however, it is possible to change the fleece of a higher quality alpaca to that of lesser quality by over preparation which may destroy the architecture of the fleece.

Halter Training

Correct halter training will help ensure that an alpaca will stand quietly for the Judge in the show ring.

Vegetable Matter

Most alpacas in paddocks will have vegetable matter contamination in their fleece. It is necessary to remove this to achieve an adequately prepared alpaca. The most efficient way to remove excessive vegetable matter is by hand-picking.

Brushing

Brushing is not recommended, especially in the blanket area, as excessive brushing or flicking will destroy the staple definition.

Washing

If it is necessary to partly wash an alpaca to clean it for showing, this should be done several weeks prior to a show so that the fleece has time to settle back to its natural appearance. Avoid detergents, conditioners and softeners which will damage the fleece and destroy its natural sheen and handle. Urine stains should be washed out and dags removed by subtle trimming. Let the alpaca dry naturally and never blow dry a wet alpaca, which will destroy the architecture of the fleece.

Toenail Trimming

Check toenails and trim if needed before the show.

Keeping Animals Clean

Keep prepared alpacas on clean pasture. Stabling or shedding is recommended for wet or inclement weather.

Show Eligibility

Check teeth, tail and their IAR or NLIS tag to ensure eligibility to exhibit.

7.2. PREPARING A FLEECE FOR SHOWING

Each fleece has a limited showing lifespan. All fleeces in a show will be handled by the stewards and the Judge in a consistent manner. After being shown several times even the best fleece will become fatigued through over-handling. This should be considered when planning fleece show entries.

Before shearing

Remove as much dust, vegetable matter and debris from the fleece as possible. Excessive blowing or rough handling may destroy its staple formation and crimp definition. An overly contaminated fleece may not be suitable for showing.

Skirting

Remove any coarse fibre, straight hairy ends or medullated sections, discarding any obvious sections of different colour. Also remove as much vegetable matter or impurities as possible.

Shake the fleece to dislodge any dust or second cuts and remove any over long or very short fibres which may have contaminated the main fleece area. Check the fleece for soundness and ensure that there are no tender sections.

Packaging

Follow the instructions in the Show Schedule which may detail the requirements for fleece presentation.

Potential to damage or contaminate fleeces may be reduced by:

- a) Placing the fleeces in satin (or similar material) or heavy-duty plastic bags for transportation to and handling at the show. Plastic garbage bags should be avoided.
- b) Noodling. Use only 1200mm wide 80gsm kraft paper. The paper must be clean and have no identifying markings on it – you must not write on the paper. All identifying markings are to be completed using the AAA [Fleece Identification Form](#) and include within the fleece bag or attached to the outside prior to delivery.
- c) Huacaya and Suri fleece 1200mm wide x 1500mm 80gsm kraft paper, weighs 140g. Do not cut down the paper for smaller fleeces. Fold the paper to accommodate the fleece. A 1200mm x 1500mm x 80gsm kraft paper is 140g. Your noodled fleece will be weighed in the noodle and 140g will be deducted from your fleece weight.

8. GLOSSARY

Term	Description
AAA or Association	The Australian Alpaca Association Ltd.
Age of Exhibit	The age of the exhibit (alpaca) depicted in months, for example, if exhibit on the day of show is 7 months and 16 days old, the animal exhibit number card will display the Age of Exhibit as '7', with the exhibit having attained 7 months of age.
Age of Fleece	The age of the fleece carried by the exhibit (alpaca) in months, for example if on the day of the show is 7 months and 16 days since last shearing or birth, the animal exhibit number card will display the Age of Fleece as "7", with the exhibit carrying a fleece with 7 months growth.
Animal Exhibit Number Card	The Animal Exhibit Number Card details the exhibit number, its age in months and fleece growth in months. It is displayed in armbands designed for this purpose and worn on the left arm of the handler.
Apprentice Judge	<p>A person who following an approved selection process, is being trained to be a Judge. At shows the Apprentice Judge is under the direct supervision of the Judge and has no input into the final judging decisions. The Apprentice Judge will be called upon by the Judge to give oral reasoning for the Judge's placing.</p> <p>An Apprentice Judge shall not officiate as a Judge at any show run under AAA Rules until fully qualified as an AAA Accredited Judge.</p>
Authorised Agent	The person authorised to enter exhibits (alpacas, fleeces or other exhibits) on behalf of the owner (the exhibitor).
Breed Standard	A description of the characteristics of an ideal example of a breed. The description may include physical detail, genetic criteria and/or productive performance criteria.
Chief Steward	<p>The person responsible for the management of a show on the day and the adherence to these rules.</p> <p>May also be the Convenor.</p>
Colourbration	An AAA show run as a coloured championship show.
Convenor	<p>The person responsible for the organisation of the show.</p> <p>May also be the Chief Steward.</p>
eAlpaca	The online International Alpaca Register (IAR) and show system.
Entire	All genitalia shall be complete, properly formed and proportioned for normal reproduction.

Term	Description
Exhibit	An alpaca, fleece, or other item (for example art, craft, garment, fleece product or photograph) that has been entered into a class for competition.
Exhibitor	The financial member who is the registered owner of the exhibit at the time of entering the show, or in the case of fleece exhibits, at the registered owner at the time of shearing.
Fleece Steward	A person who is responsible for assisting the Fleece Judge in one or more of the following capacities: <ul style="list-style-type: none"> a) placing the fleeces in their appropriate classes b) weighing the fleeces c) recording the Judge's remarks and scores on the Sow Score Sheet
IAR	International Alpaca Register
Immediate Family/Partner	A spouse, descendant, parent, grandparent, employer, employee or a person who has a shared ownership with the Judge in an exhibit being judged.
Inspection Steward	The person responsible for inspecting alpacas prior to the commencement of halter class judging.
Judge	The person appointed by the AAA as an Accredited Judge and is engaged at a show to judge classes.
Major Show	The National Show and State Capital Royal Shows
PIC	Property Identification Code
NLIS	National Livestock Identification System
Regional Committee	The committee elected by members in each region to manage the events and matters pertaining to that region.
Ring Steward	The person controlling activities in the show ring during halter class judging.
Showing and Judging Committee or SJC	The Committee established by the AAA Board to guide and manage: <ul style="list-style-type: none"> a) the appointment, management and training of AAA Accredited Judges and Apprentice Judges b) the conduct of AAA shows through this Manual and Rules c) the appointment of Judges and Apprentice Judges to shows.
Show Official	Generally, refers to the Show Convenor or Chief Steward for the purposes of the Rules. May also refer to officials of a show society.
Show Society	In the case of agricultural shows, the body under which a show is being conducted.

Term	Description
Show Catalogue or Catalogue	The written records of each class and details of every exhibit.
Show Schedule or Schedule	The conditions of entry and classes as prescribed by the AAA for the conduct of shows. Shall contain all relevant instructional information for participation in the show.
Wether	A male alpaca that has been castrated.

9. APPENDIX

9.1. APPENDIX A RECOMMENDED PLACING RUNNING SHEETS

SECTION	SURI	WHITE	LT FAWN	MED/DK FN	BROWN	ROAN	GREY	BLACK	FANCY	CHAMPION	RES CHAMP
JUNIOR FEMALE	CLASS	HADWSJF	HADLSJF	HADFSJF	HADBSJF	HADRSJF	HADGSJF	HADKSJF	HADYSJF		
	1 st										
	2 nd										
	3 rd										
JUNIOR MALE	CLASS	HADWSJM	HADLSJM	HADFSJM	HADBSJM	HADRSJM	HADGSJM	HADKSJM	HADYSJM		
	1 st										
	2 nd										
	3 rd										
INTERMEDIATE FEMALE	CLASS	HADWSIF	HADLSIF	HADFSIF	HADBSIF	HADRSIF	HADGSIF	HADKSIF	HADYSIF		
	1 st										
	2 nd										
	3 rd										
INTERMEDIATE MALE	CLASS	HADWSIM	HADLSIM	HADFSIM	HADBSIM	HADRSIM	HADGSIM	HADKSIM	HADYSIM		
	1 st										
	2 nd										
	3 rd										
ADULT FEMALE	CLASS	HADWSAF	HADLSAF	HADFSAF	HADBSAF	HADRSAF	HADGSAF	HADKSAF	HADYSAF		
	1 st										
	2 nd										
	3 rd										
ADULT MALE	CLASS	HADWSAM	HADLSAM	HADFSAM	HADBSAM	HADRSAM	HADGSAM	HADKSAM	HADYSAM		
	1 st										
	2 nd										
	3 rd										
SENIOR FEMALE	CLASS	HADWSSF	HADLSSF	HADFSSF	HADBSSF	HADRSSF	HADGSSF	HADKSSF	HADYSSF		
	1 st										
	2 nd										
	3 rd										
SENIOR MALE	CLASS	HADWSSM	HADLSSM	HADFSSM	HADBSSM	HADRSSM	HADGSSM	HADKSSM	HADYSSM		
	1 st										
	2 nd										
	3 rd										
MATURE FEMALE	CLASS	HADWSMF	HADLSMF	HADFSMF	HADBSMF	HADRSMF	HADGSMF	HADKSMF	HADYSMF		
	1 st										
	2 nd										
	3 rd										
SENIOR MALE	CLASS	HADWSMM	HADLSMM	HADFMM	HADBSMM	HARDSMM	HADGSM	HADKSMM	HADYSMM		
	1 st										
	2 nd										
	3 rd										
SUPREME CHAMPION											
BEST IN COLOUR											

SECTION	SURI	WHITE	LT FAWN	MED/DK FN	BROWN	ROAN	GREY	BLACK	FANCY	CHAMPION	RES CHAMP
JUNIOR FEMALE	CLASS	HADWSJF	HADLSJF	HADFSJF	HADBSJF	HADRSJF	HADGSJF	HADKSJF	HADYSJF		
	1 st										
	2 nd										
	3 rd										
SECTION	HUACAYA	WHITE	LT FAWN	MED/DK FN	BROWN	ROAN	GREY	BLACK	FANCY	CHAMPION	RES CHAMP
JUNIOR FEMALE	CLASS	HADWHJF	HADLHJF	HADFHJF	HADBHJF	HADRHJF	HADGHJF	HADKHJF	HADYHJF		
	1 st										
	2 nd										
	3 rd										
JUNIOR MALE	CLASS	HADWHJM	HADLHJM	HADFHJM	HADBHJM	HADRHJM	HADGHJM	HADKHJM	HADYHJM		
	1 st										
	2 nd										
	3 rd										
INTERMEDIATE FEMALE	CLASS	HADWHIF	HADLHIF	HADFHIF	HADBHIF	HADRHIF	HADGHIF	HADKHIF	HADYHIF		
	1 st										
	2 nd										
	3 rd										
INTERMEDIATE MALE	CLASS	HADWHIM	HADLHIM	HADFHIM	HADBHIM	HADRHIM	HADGHIM	HADKHIM	HADYHIM		
	1 st										
	2 nd										
	3 rd										
ADULT FEMALE	CLASS	HADWHAF	HADLHAF	HADFHAF	HADBHAF	HADRHAF	HADGHAF	HADKHAF	HADYHAF		
	1 st										
	2 nd										
	3 rd										
ADULT MALE	CLASS	HADWHAM	HADLHAM	HADFHAM	HADBHAM	HADRHAM	HADGHAM	HADKHAM	HADYHAM		
	1 st										
	2 nd										
	3 rd										
SENIOR FEMALE	CLASS	HADWHSF	HADLHSF	HADFHSF	HADBHSF	HADRHSF	HADGHSF	HADKHSF	HADYHSF		
	1 st										
	2 nd										
	3 rd										
SENIOR MALE	CLASS	HADWHSM	HADLHSM	HADFHSM	HADBHSM	HADRHSM	HADGHSM	HADKHSM	HADYHSM		
	1 st										
	2 nd										
	3 rd										
MATURE FEMALE	CLASS	HADWHMF	HADLHMF	HADFHMF	HADBHMF	HADRHMF	HADGHMF	HADKHMF	HADYHMF		
	1 st										
	2 nd										
	3 rd										
SENIOR MALE	CLASS	HADWHMM	HADLHMM	HADFHMM	HADBHMM	HADRHMM	HADGHMM	HADKHMM	HADYHMM		
	1 st										
	2 nd										
	3 rd										
SUPREME CHAMPION											
BEST IN COLOUR											

9.2. APPENDIX B MICRON/ANNUALISED WEIGHT MATRIX

POINTS																														
Micron	30	29	28	27	26	25	24	23	22	21	20	19	18	17	16	15	14	13	12	11	10	9	8	7	6	5	4	3	2	1
<16	2.00	1.90	1.80	1.70	1.60	1.50	1.40	1.30	1.20	1.10	1.00	0.95	0.90	0.85	0.80	0.75	0.70	0.65	0.60	0.55	0.50	0.45	0.40	0.35	0.30	0.25	0.20	0.15	0.10	<0.1
16-16.9	2.25	2.15	2.05	1.95	1.80	1.70	1.60	1.45	1.35	1.25	1.15	1.10	1.00	0.95	0.90	0.85	0.80	0.75	0.65	0.60	0.55	0.50	0.45	0.40	0.35	0.30	0.25	0.15	0.10	<0.1
17-17.9	2.55	2.40	2.30	2.15	2.05	1.90	1.80	1.65	1.55	1.40	1.25	1.20	1.15	1.10	1.00	0.95	0.90	0.85	0.75	0.70	0.65	0.55	0.50	0.45	0.40	0.30	0.25	0.20	0.15	<0.15
18-18.9	2.85	2.70	2.55	2.45	2.30	2.15	2.00	1.85	1.70	1.55	1.40	1.35	1.30	1.20	1.15	1.05	1.00	0.95	0.85	0.80	0.70	0.65	0.55	0.50	0.45	0.35	0.30	0.20	0.15	<0.15
19-19.9	3.15	3.00	2.85	2.70	2.55	2.35	2.20	2.05	1.90	1.75	1.60	1.50	1.40	1.35	1.25	1.20	1.10	1.05	0.95	0.85	0.80	0.70	0.65	0.55	0.50	0.40	0.30	0.25	0.15	<0.15
20-20.9	3.50	3.30	3.15	2.95	2.80	2.60	2.45	2.25	2.10	1.90	1.75	1.65	1.55	1.50	1.40	1.30	1.20	1.15	1.05	0.95	0.85	0.80	0.72	0.60	0.55	0.45	0.35	0.25	0.20	<0.2
21-21.9	3.85	3.65	3.45	3.25	3.10	2.90	2.70	2.50	2.30	2.10	1.95	1.85	1.75	1.65	1.55	1.45	1.35	1.25	1.15	1.05	0.95	0.85	0.75	0.65	0.60	0.50	0.40	0.30	0.20	<0.2
22-22.9	4.20	4.00	3.80	3.55	3.35	3.15	2.95	2.75	2.55	2.30	2.10	2.00	1.90	1.80	1.70	1.60	1.50	1.35	1.25	1.15	1.05	0.95	0.85	0.75	0.65	0.55	0.40	0.30	0.20	<0.2
23-23.9	4.50	4.30	4.05	3.90	3.65	3.40	3.20	3.00	2.75	2.55	2.30	2.20	2.05	1.95	1.85	1.70	1.60	1.50	1.40	1.25	1.15	1.05	0.90	0.80	0.70	0.60	0.45	0.35	0.25	<0.25
24-24.9	4.70	4.45	4.25	4.10	3.90	3.65	3.45	3.25	3.00	2.75	2.50	2.35	2.25	2.10	2.00	1.85	1.75	1.60	1.50	1.35	1.25	1.10	1.00	0.85	0.75	0.65	0.50	0.40	0.25	<0.25
25-25.9	4.80	4.55	4.35	4.20	4.05	3.80	3.60	3.40	3.20	2.90	2.65	2.50	2.40	2.25	2.10	2.00	1.85	1.70	1.60	1.45	1.35	1.20	1.05	0.95	0.80	0.70	0.55	0.45	0.30	<0.3
26+	4.90	4.65	4.45	4.30	4.15	3.90	3.75	3.55	3.30	3.00	2.75	2.60	2.45	2.35	2.20	2.05	1.90	1.80	1.65	1.50	1.40	1.25	1.10	1.00	0.85	0.75	0.65	0.50	0.30	<0.3
WEIGHT																														

9.3. APPENDIX C FLEECE JUDGING SCORE CARD



SURI FLEECE JUDGING SCORE CARD

SHOW: _____

CLASS: _____ ENTRY NO: _____

STUD: _____

ALPACA NAME: _____

CATEGORY	DESCRIPTION	MAX	POINTS
Fineness/Annualised Weight	Average Fibre diameter from multiple sites (as related to the annualised weight from matrix) Weight _____	30	
Handle	Softness, independent of fineness	5	
Uniformity of micron <i>across entire fleece</i>	Across entire fleece (lacks variation)	10	
Uniformity of micron within lock	Within lock (lack of / low presence of guard hair)	10	
Uniformity of length	Consistent length throughout	5	
Uniformity of colour	Lack of colour contamination and variation with within lock and across fleece	5	
Style/Density of Lock	Well defined lock formation and style, displaying solidity of lock	10	
Lustre	Ability to reflect light	15	
Impurities	Lack of tenderness and impurities such as cotting, vegetable matter, dirt, seed, stain and tip damage etc	5	
Effective skirting	Effective removal of coarse fibre and other contaminants from around fleece presented	5	
TOTAL		100	



HUACAYA FLEECE JUDGING SCORE CARD

SHOW: _____

CLASS: _____ ENTRY NO: _____

STUD: _____

ALPACA NAME: _____

CATEGORY	DESCRIPTION	MAX	POINTS
Fineness/Annualised Weight	Average Fibre diameter from multiple sites (as related to the annualised weight from matrix) Weight _____	30	
Handle	Softness, independent of fineness	5	
Uniformity of micron <i>across entire fleece</i>	Across entire fleece (lacks variation)	10	
Uniformity of micron within staple	Within staple (lack of / low presence of guard hair)	10	
Uniformity of length	Consistent length throughout	5	
Uniformity of colour including patterning	Lack of colour contamination and variation with within staple and across fleece. Includes uniformity of patterning in fancy fleeces	5	
Character and style	Crimp definition and alignment within staple and throughout fleece	10	
Density of Staple	Staple density and definition, alignment and solidity throughout fleece	5	
Brightness	Ability to reflect light	10	
Impurities	Lack of tenderness and impurities such as cotting, vegetable matter, dirt, seed, stain and tip damage etc	5	
TOTAL		100	

